

SAINT JOSEPH'S UNIVERSITY HAWKS



**SENIOR JEN
PETERS**



**SENIOR ELIZABETH
FOX**



**SENIOR GRACE
DINN**



2012 WOMEN'S LACROSSE MEDIA GUIDE

HAWKS



**SENIOR MEGHAN
MCDEVITT**



**SENIOR CARLY
KINDBOM**



**SENIOR ALLI
MACDONALD**



**SENIOR ALANA
GLANELL**

2012 WOMEN'S LACROSSE



TABLE OF CONTENTS

2012 Preview	2
Head Coach Denise Roessler	3
Assistant Coaches	4
The Hawk	4
Finnesey Field	5
2012 Roster	6
Hawk Profiles	7-12
Newcomers	12-13
2011 Year-In-Review	14
2011 Statistics	15
2011 Atlantic 10 Statistics	16
Atlantic 10 Conference	17
Yearly Records	18
Career Records	19
Single Season Records	20
Honors and Awards	21
All-Time Roster	22
All-Time Results	23-24
Administration	25
Saint Joseph's University	26

QUICK FACTS

The University

Location	Philadelphia, Pa. 19131
Founded	1851
Enrollment	4,600
Denomination	Roman Catholic (Jesuit)
Nickname	Hawks
Colors	Crimson and Gray
Athletic Affiliation	NCAA Division I
Conference	Atlantic 10
Home Field (Capacity)	Finnesey Field (600)

The Team

Head Coach	Denise Roessler (Old Dominion '95)
Career Record	71-137/14 years
Record at SJU	71-128/13 years
Assistant Coaches	Lindsey-Kate McCool (SJU '08) – 4th year
.....	Suzy Herlihy (SJU '09) – 2nd year
Women's Lacrosse Office	(610) 660-2585
Captain	Elizabeth Fox
Letterwinners Returning/Lost	24/3
2011 Overall Record	5-11
2011 Atlantic 10 Record/Finish	1-6/8th

WWW.SJUHAWKS.COM



www.sjuhawks.com

CREDITS

The 2012 Saint Joseph's University women's lacrosse media guide was written and edited by Chris Humbrecht. Editorial assistance was provided by Marie Wozniak, Jack Jumper, and Joe Greenwich. Photography by Greg Carroccio of Sideline Photos. Covers designed by Chris Humbrecht.



SEASON OUTLOOK

With 22 of 27 players, including 10 of 12 starters, returning from last year's squad, there is more than enough reason for optimism for the 2012 Saint Joseph's women's lacrosse team. Just three seasons removed from their Atlantic 10 Championship Game, head coach **Denise Roessler** and the Hawks are poised to return to the postseason.

Saint Joseph's will look to team captain **Elizabeth Fox** and the rest of the eight-member senior class for leadership. Fox, a gritty defender, was an Atlantic 10 All-Conference Second Team selection each of the past two seasons and has started all 32 games since 2010. She led the team with 30 caused turnovers last season, which stands as the third best mark in a single-season for a Hawk.

2011 leading scorers **Grace Dinn** (30 goals, 11 assists), **Jen Peters** (26 goals, 2 assists) and **Megan McDevitt** (15 goals, 17 assists) all return for their senior seasons and will provide an offensive spark. Seniors **Alana Glanell** and **Carly Kindbom**, as well as talented juniors **Gwen Nihill** and **Nora McGuire**, will bolster the attack for the Hawks. After strong freshman campaigns, **Abby Ananian**, **Val Paolucci** and **Jess Nawojski** will be counted on to provide depth while the 2011 recruiting class brought in four attackers in **Lauren Young**, **Gianna Minutillo**, **Hallie Pickard**, and **Julia Falcone**.

In the midfield, the Hawks return senior and three-year starter **Julie Mineweaser**. Mineweaser will run with Kindbom, Glanell and Nihill as well as junior **Maggie Mauer** and sophomore **Michele Granger**. Freshman **Hannah Hutchins** will be a new face in an experienced and deep midfield that will likely show several different combinations throughout the season.

Along with Fox, senior **Alli MacDonald** helps strengthen the back line, causing 19 turnovers a season ago. The senior tandem will lead a sturdy defense with the addition of sophomore transfer **Allison Heath**. Support from juniors **Alexa Matthews**, **Jess Phelan** and **Heather Olson** and sophomores **Brittany Hanrahan**, **Meghan Watkin** and **Kaitlyn McSwiggan**



Senior Grace Dinn is in the top ten in SJU history with 77 goals through her first three seasons.

will be needed for their 16-game schedule. Freshman and two-time First Team All-League selection, **Molly Curcio** (Manheim Township High School) has shown she can compete at this level right away and is expected to see action this season.

Between the pipes for Saint Joseph's will be junior **Alisha Aquilino**, who has posted an 8.39 goals against average in limited action as the backup the past two seasons. Freshman **Nora McGeever** will start the season as the backup in net, as she started for three Philadelphia Catholic League and District 12 championship teams at Archbishop Carroll.

The Hawks hope to build on a strong fall and will be challenged by new foes in Jacksonville, Manhattan, and Presbyterian this spring. Other non-conference opponents include Drexel, Wagner, Monmouth, Saint Francis (Pa.), Old Dominion and Rutgers. The Hawks open up Atlantic 10 play March 30th at George Washington.



HEAD COACH



Denise Roessler Head Coach – 14th Year Old Dominion '95

Denise Roessler returns for her 14th year as head coach of the Saint Joseph's women's lacrosse team. In 13 years, Roessler has compiled a 71-128 record highlighted by two Atlantic 10 Tournament appearances and her first A-10 Coach of the Year award in 2009.

Roessler led the Hawks to the school's most successful season in 2009 with their first appearance in a championship final, marking the school's second A-10 Tournament berth after their first appearance in 2001. She led the Hawks to a program-best 5-2 record in the A-10, tying for second place and posting an overall record of 10-8.

A 1995 graduate of Old Dominion, where she earned a bachelor's of science degree in sports medicine, Roessler previously served as the head women's lacrosse coach at La Salle University.

She led the Explorers to a 5-9 overall record in their inaugural season of varsity competition in 1998.

Roessler came to SJU in the fall of 1998 and spent three years as an assistant field hockey coach in addition to her lacrosse head coaching duties.

Prior to taking over at La Salle, Roessler served as the head junior varsity and assistant varsity field hockey coach at Bishop Eustace Prep. In 1995, she led Eustace to a 10-0-2 record.

In the spring of 1996, she joined the staff at her alma mater, Camden Catholic ('91), as a volunteer assistant lacrosse coach.

At Old Dominion, Roessler played women's lacrosse under Sue Stahl, who also served as the United States National Team head women's lacrosse coach from 1989-2005.

A native of Pennsauken, N.J., Roessler was a First Team All-Conference and All-Parochial selection in lacrosse as a senior at Camden Catholic.

Roessler currently resides in Marlton, N.J. with her husband Scott and their daughter, Jordan.

ROESSLER'S RECORD YEAR-BY-YEAR

La Salle	W	L
1998	5	9
TOTAL	5	9

Saint Joseph's	W	L
1999	3	11
2000	7	8
2001	5	10
2002	3	10
2003	4	11
2004	8	6
2005	5	10
2006	5	11
2007	7	9
2008	7	9
2009	10	8
2010	2	14
2011	5	11
TOTAL	71	128
OVERALL	76	137

ROESSLER'S RÉSUMÉ

Head Coach	Years
Saint Joseph's	1999-Present
La Salle University	1998
Assistant Coach	Years
Camden Catholic H.S.	1996
Player	Years
Old Dominion	1991-95



Roessler enters her 14th season in 2012

ALL-TIME SJU COACHING RECORDS

Year	Head Coach	W-L	Pct.	Postseason
1993-98	Denise Ligget	29-52	.358	
1999-Present	Denise Roessler	71-128	.357	A-10 Tournament (2)
Totals	17 years	100-180	.357	





ASSISTANT COACHES



Lindsey-Kate McCool
Assistant Coach – 4th Year
Saint Joseph's '08

Lindsey-Kate McCool is a 2008 graduate of SJU and returns to the Hawk staff for her fourth season in 2012.

McCool graduated from Saint Joseph's as the all-time leader in ground balls (151), tied for the all-time lead in games played (63), ranked second in career assists (65) and fifth in all-time points (140).

Additionally, McCool led the team in assists all four years on Hawk Hill and was vital to the offense from the midfield position. She also provided excellent defense, causing 56 turnovers, which ranks third all-time in the program's history.

McCool completed her master's in criminal justice in 2010 at Saint Joseph's and resides in Marlton, N.J. with her husband Tim.



Suzy Herlihy
Assistant Coach - 2nd Year
Saint Joseph's '09

Suzy Herlihy, a 2009 SJU graduate, enters her second season as an assistant coach.

She ranks second on the Hawks' all time list for goals against average (8.97), third all-time in saves (462) and fifth all-time in save percentage (.510) and ground balls (126). The three-year goal-keeper currently holds the career (24) and single-season (10) records for most wins.

Herlihy was named the 2009 Atlantic 10 Defensive Player of the Year and is the only player in program's history to receive the award. She led the league in goals against average (8.48) and save percentage (.521) that season.



Women's coaching staff from L to R: Suzy Herlihy, Lindsey-Kate McCool and Denise Roessler.

ALL-TIME SJU ASSISTANT COACHES

Jessica Blake (8)	1999-06
Jebb Chagan (2)	2002-03
Jill DePetris (2)	2008-09
Anysia Fedec (4)	1994-97
Ginger Flocco (1)	2007
Melissa Cosgriff (8)	2003-09
Katelyn Kinney (1)	2008
Dayle Laughlin (1)	1993
Lindsey-Kate McCool (4th)	2009-Present
Nora Meah (2)	2000-02
Lauren Simone (1)	2006
Tara Warrington (1)	1993
Suzy Herlihy (2nd)	2011-Present

THE HAWK



One of the most famous mascots in college sports, the Saint Joseph's Hawk has been flapping its wings for 56 years.

The Hawk, which celebrated its golden anniversary in 2005-06, is best known for staying in constant motion by flapping its wings throughout every basketball game and representing the Saint Joseph's motto, "The Hawk Will Never Die."

Saint Joseph's athletic teams have been recognized with the nickname "Hawks" since 1929. At that time, the school's yearbook editor initiated a contest among the student body for a symbol. More than 100 submissions were narrowed, with "Hawks" winning out over "Grenadiers" by a slim margin. The name was appropriate because it typified "the fighting spirit of our crimson and gray athletes and it is suggestive of the aerial attack which has made our football team famous." Football, ironically, was discontinued at SJU following the 1939 season.

The Hawk mascot has garnered numerous accolades in its 56-year history. It has been selected as the nation's top mascot by *The Sporting News*, *Sports Illustrated*, *Sports Illustrated for Kids*, *Street & Smith's Basketball Yearbook*, *ESPN College Basketball* magazine and was nominated for the Mascot Hall of Fame in 2008.



FINNESEY FIELD

Finnesey Field, currently in its 83rd year, has been home to 10 different varsity squads at Saint Joseph's. Opened in 1929 as home to the SJU football squad, the field has undergone numerous changes over the years and has been home to over a thousand SJU varsity games, matches and track meets.

The most recent upgrade occurred in 2008 when the AstroTurf, laid down in 2001, was replaced with new, state-of-the-art TigerTurf.

Home to the men's and women's lacrosse teams, men's and women's soccer teams, the field has seen other modifications since its inception in 1929. The prospect of a 70,000-seat bowl stadium for football was dashed when the sport was discontinued following the 1939 season.

Baseball re-occupied the space in 1947, calling Finnesey home until 1959. Saint Joseph's men's soccer began in 1958 and played every season but one (1960) at Finnesey. In 1960, the original grandstand, as well as the hillside seating near Overbrook Avenue, were eliminated as Villiger (now Post) Hall and the Bluett Theatre were built. In the process of the 1960 construction, the field's elevation was raised five feet to its current location.

In 1990, artificial turf replaced the grass, making Finnesey a true multi-purpose facility. In 1994 the installation of lights furthered the use of the grounds, while new bleachers in 2003 on the hill next to Mandeville Hall were another touch of renovation to a historic stadium.



The women's lacrosse squad is 59-86 in 19 seasons on Hawk Hill. The best season came in 2004 when the Hawks went 5-2 en route to an 8-6 campaign. The first game was played on March 23, 1993 when SJU defeated Gwynedd Mercy, 18-4.

The men's lacrosse team has compiled an overall 53-68 mark in 18 seasons.

The location has also been home to men's soccer since 1958 and women's soccer since 1996, while the field hockey team wrapped up its last season on Finnesey in 2007.

Overall, the site has seen 1,161 games entering 2012, and SJU teams have put together a total record of 526-586-49 in 82 years.

WOMEN'S LACROSSE RESULTS

Year	W-L	Year	W-L
1993	3-2	2003	3-6
1994	5-5	2004	5-2
1995	2-6	2005	2-7
1996	5-4	2006	4-4
1997	3-4	2007	5-5
1998	2-8	2008	5-3
1999	2-5	2009	4-5
2000	5-4	2010	1-6
2001	2-6	2011	3-6
2002	3-3	Total	59-86

MOST CONSECUTIVE WINS ON FINNESEY FIELD
5 (2/27-4/6/08)

MOST GOALS SCORED BY SJU ON FINNESEY FIELD
25 vs. Mercyhurst, 4/27/1996

ALL-TIME ALL-SPORTS RECORDS AT FINNESEY FIELD

Sport	Seasons	First	Last	W	L	T	Pct.
Baseball ^	12	1947	1958	18	19		.486
Field Hockey	25	1983	2007	124	97	5	.548
Football	11	1929	1939	22	19	2	.535
Men's Lacrosse	19	1993	present	53	74		.417
Women's Lacrosse	19	1993	present	59	86		.406
Men's Soccer *	53	1958	present	165	183	31	.485
Women's Soccer	16	1996	present	59	58	11	.458
Softball	8	1983	1990	26	50		.342
Totals		1,161 games		526	586	49	.453

^—Baseball records are incomplete

*—No games were played during 1960 season



2012 ROSTER

No.	Name	Yr.	Pos.	Ht.	Hometown	High School
1	Alana Glanell	Sr.	M	5-4	Davidsonville, Md.	South River
2	Alli MacDonald	Sr.	M	5-9	Westfield, N.J.	Westfield
3	Gwen Nihill	Jr.	A/M	5-4	Marlton, N.J.	Holy Cross
4	Julie Mineweaser	Sr.	M	5-3	Harleysville, Pa.	North Penn
5	Lauren Young	Fr.	A	5-5	Mullica Hill, N.J.	Clearview Regional
6	Molly Curcio	Fr.	D	5-6	Lancaster, Pa.	Manheim
7	Hannah Hutchins	Fr.	M	5-7	Weston, Conn.	Weston
8	Nora Mcguire	Jr.	A	5-0	Summit, N.J.	Summit
10	Gianna Minutillo	Fr.	A	5-5	Hillsborough, N.J.	Hillsborough
11	Alexa Matthews	Jr.	M	5-3	Duxbury, Mass.	Duxbury
12	Jessica Nawojski	So.	A	5-2	Malvern, Pa.	Great Valley
13	Maggie Mauer	Jr.	A	5-5	Eagleville, Pa.	Archbishop Carroll
14	Julia Falcone	Fr.	M	5-6	West Chester, Pa.	West Chester East
15	Heather Olson	Jr.	D	5-8	Alexandria, Va.	Bishop Ireton
16	Elizabeth Fox*	Sr.	D	5-7	Marlton, N.J.	Cherokee
17	Jess Phelan	Jr.	D	5-10	Ellicott City, Md.	Mount De Sales Academy
19	Brittany Hanrahan	So.	D	5-10	Hatfield, Pa.	North Penn
20	Carly Kindbom	Sr.	M	5-7	Medford, N.J.	Holy Cross
21	Abby Ananian	So.	M	5-8	Belmont, Mass.	Belmont
22	Meghan McDevitt	Sr.^	A	5-4	Lancaster, Pa.	Manheim Township
23	Jen Peters	Sr.	A/M	5-7	Westminster, Md.	Winters Mill
24	Grace Dinn	Sr.	M	5-6	Kensington, Md.	Academy of the Holy Cross
25	Hallie Pickard	Fr.	M	5-9	Short Hills, N.J.	Millburn
26	Kaitlyn McSwiggan	So.	D	5-8	Allendale, N.J.	Immaculate Heart Academy
27	Allison Heath	So.	D	5-8	Newtown Square, Pa.	Radnor
28	Meghan Watkin	So.	M/D	5-3	West Chester, Pa.	West Chester Bayard Rustin
29	Val Paolucci	So.	M/A	5-5	Swarthmore, Pa.	Springfield
30	Alisha Aquilino	Jr.^	GK	5-2	Abington, Pa.	Abington
31	Nora McGeever	Fr.	GK	5-8	Drexel Hill, Pa.	Archbishop Carroll
34	Michele Granger	So.	M/A	5-4	Allendale, N.J.	Northern Highlands Regional

^ - Redshirt

Head Coach: Denise Roessler (Old Dominion '95) – 14th season

Assistant Coaches: Lindsey-Kate McCool (Saint Joseph's '08) – Fourth season
Suzy Herlihy (Saint Joseph's '09) - Second season

Captain: Elizabeth Fox

TEAM BREAKDOWN

BY CLASS

Seniors (8): Dinn, Fox, Glanell, Kindbom, MacDonald, McDevitt, Mineweaser, Peters

Juniors (7): Aquilino, Matthews, Mauer, Mcguire, Nihill, Olson, Phelan

Sophomores (8): Ananian, Granger, Hanrahan, Heath, McSwiggan, Nawojski, Paolucci, Watkin

Freshmen (7): Curcio, Hutchins, Minutillo, Pickard, Falcone, McGeever, Young

BY STATE

Connecticut (1): Hutchins

Maryland (4): Dinn, Glanell, Peters, Phelan

Massachusetts (2): Ananian, Matthews

New Jersey (10): Fox, Granger, Kindbom, MacDonald, Mcguire, McSwiggan, Minutillo, Nihill, Pickard, Young

Virginia (1): Olson

Pennsylvania (12): Aquilino, Curcio, Falcone, Hanrahan, Heath, Mauer, McDevitt, McGeever, Mineweaser, Nawojski, Paolucci, Watkin

PRONUNCIATION GUIDE

(Alisha) Aquilino: ACK-wil-ino

Alana Glanell: Ah-LAH-nah GLAH-nell

(Carly) Kindbom: KIN-dbom

(Maggie) Mauer: MOW-er

(Jessica) Nawojski: Nuh-voy-ski

(Gwen) Nihill: Nigh-hill

(Val) Paolucci: Pay-loo-chi

(Jess) Phelan: Fail-in

(Denise) Roessler: ROSS-lerr

SENIORS



Grace Dinn
Senior • 5-6 • Midfield
Kensington, Md. • Academy of Holy Cross

24

2010 Atlantic 10 All-Conference Second Team...

2011: Started all 16 games...Led the team in goals (30) and points (41) while adding 11 assists...Scored three goals against Monmouth, Duquesne and Richmond...Picked up 22 ground balls...**2010:** Started all 16 games...Led the team in goals (38), points (42), and ground balls (31)...Was second on the team in caused turnovers with 12... Scored four goals on four occasions...**2009:** Played in all 18 games...Scored nine goals and had three assists for 12 points...Scored two goals each in back-to-back wins over Old Dominion and Temple...**High School/Personal:** All-American, All-County, and All-Conference senior year...Served as team captain as a senior...Also earned All-Conference honors sophomore and junior years...Lettered three times in soccer and twice in swimming...Mother, Sheila, was an Academic All-American in field hockey at William & Mary...Father, Scott, swam at Rutgers... Born November 24, 1990...Majoring in social sciences.

YEAR	GP-GS	SH	G	A	PTS	GWG	GB	CT
2009	18-0	27	9	3	12	0	14	8
2010	16-16	79	38	4	42	1	31	12
2011	16-16	97	30	11	41	0	22	7
Totals	50-32	203	77	18	95	1	67	27



Elizabeth Fox - Captain
Senior • 5-7 • Defense
Marlton, N.J. • Cherokee

16

2010 & 2011 Atlantic 10 All-Conference Second Team...

2011: Started all 16 games on defense...Led the team with 42 ground balls and 30 caused turnovers...Scored three goals on the season...**2010:** Started all 16 games...Was second on the team in ground balls (29) and third in caused turnovers (11)...Picked up a career-high five ground balls against Drexel...**2009:** Saw action in nine games with one start after missing most of the season due to injury...**High School/Personal:** All-American Honorable Mention, All-Group 4 First Team, All-Conference First Team, All-South Jersey Second Team senior year...Led team to Group 4 State Championship as well as Group 4 South Jersey title...Four-time All-Conference selection...Four-time letterwinner in field hockey...Born November 9, 1989...Pharmaceutical marketing major.

YEAR	GP-GS	SH	G	A	PTS	GWG	GB	CT
2009	9-1	0	0	0	0	0	3	2
2010	16-16	2	1	0	1	0	29	11
2011	16-16	5	3	0	3	0	42	30
Totals	41-33	7	4	0	4	0	74	43



Senior Liz Fox has been the anchor of the defense, making all 32 starts in the previous two seasons.



Alana Glanell
Senior • 5-3 • Midfield
Davidsonville, Md. • South River

1

2011: Played in 14 games making six starts...Second on the team with 13 assists to go with six goals...Had two goals against La Salle and St. Bonaventure...**2010:** Started all 16 games...Led the team in assists with 16 and was fourth in points (23)...Tallied a career-high four assists against Monmouth...**2009:** Saw action in two games...**High School/ Personal:** Letterwinner in lacrosse...Born May 7, 1990... Majoring in international business.

YEAR	GP-GS	SH	G	A	PTS	GWG	GB	CT
2009	2-0	0	0	0	0	0	0	0
2010	16-16	31	7	16	23	0	15	2
2011	14-6	15	6	13	19	1	13	0
Totals	32-22	46	13	129	42	1	28	2



Carly Kindbom
Senior • 5-7 • Midfield
Medford, N.J. • Holy Cross

20

2011: Started all 16 games...Picked up six points from five goals and one assist...Grabbed 24 ground balls and 12 caused turnovers...**2010:** Played in 10 games, starting nine...Tallied five goals and eight caused turnovers...Scored a career-high three goals in a win over Lafayette... **2009:** Played in seven games...Picked up a ground ball and had one caused turnover...**High School/ Personal:** All-Conference All-South Jersey, All-County First Team senior year...Named to Academic All-America team senior year...Played one year on SJU field hockey squad... Father, Chris, played baseball at Mount St. Mary's...Born March 20, 1990... Interdisciplinary health services major.

YEAR	GP-GS	SH	G	A	PTS	GWG	GB	CT
2009	7-0	1	0	0	0	0	1	1
2010	10-9	9	5	0	5	0	7	8
2011	16-16	14	5	1	6	0	24	12
Totals	33-25	24	10	1	11	0	32	21



SENIORS



Alli MacDonald
Senior • 5-9 • Midfield
Westfield, N.J. • Westfield

2

2011: Started all 16 games at defense...Third on the team in ground balls (29) and second in the team in caused turnovers (19)...**2010:** Started all 16 games...Led the team in caused turnovers (13) and was tied for third in ground balls (29)...**2009:** Played in all 18 games with one start...Totaled five points with two goals and three assists...Had 11

ground balls and 11 caused turnovers...Picked up a season-high three ground balls and had a goal and an assist in a win over Villanova...**High School/Personal:** Named to All-County First Team senior year...Three-year letterwinner in lacrosse...Brother, Chris, was a captain of the Villanova men's lacrosse team...Born December 12, 1989...Business major.

YEAR	GP-GS	SH	G	A	PTS	GWG	GB	CT
2009	18-1	4	2	3	5	0	11	11
2010	16-16	3	1	1	2	0	29	13
2011	16-16	0	0	0	0	0	29	19
Totals	50-33	7	3	4	7	0	59	43



Julie Mineweaser
Senior • 5-3 • Midfield
Harleysville, Pa. • North Penn

4

2009 Atlantic 10 Rookie Team Selection...**2011:** Started all 16 games in the midfield...Scored all three goals in win over Wagner...Picked up 25 ground balls and caused 15 turnovers...**2010:** Started all 16 games...Finished second on the team in assists (8) and ground balls (30) and fourth in goals (11)...Tallied four points with three goals

and an assist against Duquesne...**2009:** Started all 18 games...Was third on the team in ground balls (29) and tied for second in assists (10)...Totaled 26 points and had 16 goals...Named Atlantic 10 Rookie of the Week after scoring a game-high three goals with one assist in a win over Lafayette...Had four points with three goals and one assist on two occasions...Had a career-high seven ground balls against Lehigh... **High School/Personal:** Lettered in lacrosse...Born November 28, 1989...Business major.

YEAR	GP-GS	SH	G	A	PTS	GWG	GB	CT
2009	18-18	48	16	10	26	1	29	16
2010	16-16	31	11	8	19	0	30	9
2011	16-16	13	3	1	4	1	25	15
Totals	50-50	92	30	19	49	2	84	40



Meghan McDevitt
Senior • 5-4 • Attack
Lancaster, Pa. • Manheim Township

22

2009 Atlantic 10 Rookie Team Selection...**2011:** Played in 16 games making 15 starts...Led the team in assists (17), was second in scoring (32 points) and third in goals (15)...Scored four goals in loss to Temple...**2010:** Played in three games before suffering a season-ending injury...Scored four goals and tallied an assist in win over Lafayette...

2009: Started all 18 games...Was third on the team in points (38) and goals (32)...Picked up 19 ground balls and had 10 caused turnovers...Named Atlantic 10 Rookie of the Week after a three goal, two assist performance in the season-opener at Lehigh...Scored a career-high four goals in a win over La Salle...**High School/Personal:** Academic All-America team and captain senior year...All-League and All-Section First Team sophomore and junior years...All-American Honorable Mention junior year...Lettered four years in lacrosse and two in field hockey...Born September 9, 1990...Majoring in elementary and special education.

YEAR	GP-GS	SH	G	A	PTS	GWG	GB	CT
2009	18-18	72	32	6	38	0	19	10
2010	3-3	7	4	2	6	0	6	1
2011	16-15	40	15	17	32	0	13	3
Totals	37-36	119	51	25	76	0	38	14



Senior Meghan McDevitt



Senior Jen Peters

SENIORS & JUNIORS



Jen Peters
Senior • 5-7 • Attack/Midfield
Westminster, Md. • Winters Mill

23

2011: Played in 14 games making 13 starts...Second on the team in goals (26) and third in points (28)...Scored four goals in loss to Old Dominion...**2010:** Started all 16 games...Led the team in draw controls with 39...Was second on the team in goals (26) and points (32)...Scored three goals and dished two assists against St. Bonaventure...**2009:** Started all 18 games...Led the team in game-winning goals with four...Was fourth on the team in goals (23) and assists (9) and tied for fourth in points (32)...Scored a career-high four goals on two occasions...Named A10 Rookie of the Week after scoring five goals and assisting one goal in two games...Had a six-point performance with four goals and two assists in a win over La Salle...Scored the game-winning goal with no time remaining in an 11-10 Atlantic 10 semifinal victory over Richmond...**High School/Personal:** All-American selection senior year...All-Conference and All-County First Team for three years... *Westminster Eagle* Athlete of the Year and All-Metro Second Team senior year...Lettered in lacrosse...Four-year starter...Three-time letterwinner in soccer and basketball...All-County and All-Conference in soccer and basketball...Born May 26, 1990... Majoring in elementary education.

YEAR	GP-GS	SH	G	A	PTS	GWG	GB	CT
2009	18-18	61	23	9	32	4	18	8
2010	16-16	66	26	6	32	0	12	4
2011	14-13	59	26	2	28	2	10	2
Totals	48-47	186	75	17	92	6	40	14



Alexa Matthews
Junior • 5-3 • Midfield
Duxbury, Mass. • Duxbury

11

2011: Played in 14 games...Picked up five ground balls and caused three turnovers...**2010:** Saw action in five games...**High School/ Personal:** Named to the All-Scholastic League by the *Patriot Ledger* and Honorable Mention All-Scholastic by the *Boston Globe*...Helped the team to a 19-2 record and league title...Born March 25, 1991...International business major.

YEAR	GP-GS	SH	G	A	PTS	GWG	GB	CT
2010	5-0	0	0	0	0	0	4	1
2011	14-0	0	0	0	0	0	5	3
Totals	19-0	0	0	0	0	0	9	4



Maggie Mauer
Junior • 5-5 • Attack
Eagleville, Pa. • Archbishop Carroll

13

2011: Played in one game...Picked up one ground ball...**High School/Personal:** Transferred from George Mason...Saw action in three games with the Patriots...Won the Catholic League title in lacrosse all four years at Archbishop Carroll with an undefeated record each season...Born November 4, 1990...Humanities major.

YEAR	GP-GS	SH	G	A	PTS	GWG	GB	CT
2011	1-0	0	0	0	0	0	1	0
Totals	1-0	0	0	0	0	0	1	0



Alisha Aquilino
Junior • 5-2 • Goalkeeper
Abington, Pa. • Abington

30

2011: Played in five games making five starts in net...Allowed 11 goals while making six saves...**2010:** Played in and started five games before suffering a season-ending injury...Tallied 30 saves...**High School/Personal:** Received Honorable Mention All-American as a senior and First Team All-American honors as a junior...Named Suburban One Conference Player of the Year...Three-time First Team All-League...Helped team to 18 wins in three consecutive seasons with 120 saves and a .550 save percentage as a junior...Born October 22, 1990...Food marketing major.

YEAR	GP-GS	MIN	GA	GAA	SVS	PCT.	W-L	GB
2010	5-5	300:00	35	7.00	30	.462	2-3	7
2011	3-0	67:25	11	9.79	6	.353	0-0	2
Totals	3-0	367:25	46	8.39	36	.407	2-3	9



Nora McGuire
Junior • 5-0 • Attack
Summit, N.J. • Summit

8

2011: Appeared in 12 contests...Scored one goal and dished out three assists...**2010:** Played in 11 games...Dished five assists and scored one goal...**High School/Personal:** Three-year MVP...Named First Team All-Conference and First Team All-County as a junior...Named First Team All-State as a senior...Broke school record for career assists (133) as well as assists (78) and points (139) in a season...Born January 3, 1991...Social science major.

YEAR	GP-GS	SH	G	A	PTS	GWG	GB	CT
2010	11-1	4	1	5	6	0	3	0
2011	12-0	7	1	3	4	0	7	2
Totals	23-1	11	2	8	10	0	10	2



JUNIORS & SOPHOMORES



Gwen Nihill
Junior • 5-4 • Attack/Midfield
Marlton, N.J. • Holy Cross

3

2011: Started all 16 games...Had 13 points off of eight goals and five assists...Scored two goals in win at Saint Francis (Pa.)...**2010:** Played in all 16 games with nine starts... Scored four goals and tallied two assists...**High School/Personal:** High school All-American...Named Honorable Mention All-South Jersey and Second Team BCSL Conference All-Stars...Received Midfielder of the Year award as a senior and Attacker of the Year as a junior...Helped team to a 17-4 record as a senior...Born April 28, 1991...Interdisciplinary health services major.

YEAR	GP-GS	SH	G	A	PTS	GWG	GB	CT
2010	16-9	13	4	2	6	0	7	3
2011	16-16	34	8	5	13	0	32	9
Totals	32-25	47	12	7	19	0	39	12



Heather Olson
Junior • 5-8 • Defense
Alexandria, Va. • Bishop Ireton

15

2011: Started all 16 games...Caused eight turnovers and picked up nine ground balls...**2010:** Played in 12 games with three starts... Tallied six draw controls...**High School/Personal:** Named First Team All-Conference as a senior and Second Team All-Conference as a sophomore and junior...Received team's Cardinal Award for Leadership...Helped her

team to a 19-4 record and national rankings (26th) as a senior...Born February 20, 1991...Elementary/special education major.

YEAR	GP-GS	SH	G	A	PTS	GWG	GB	CT
2010	12-3	0	0	0	0	0	4	2
2011	16-16	0	0	0	0	0	9	8
Totals	28-19	0	0	0	0	0	13	10



Jess Phelan
Junior • 5-10 • Defense
Ellicott City, Md. • Mount De Sales Academy

17

2011: Did not play...**2010:** Saw action in three games...**High School/ Personal:** Captained team as a senior...Received Unsung Hero award senior year...Lettered three years in lacrosse and was named junior varsity MVP as a freshman...Born May 14, 1991...Food marketing major.

YEAR	GP-GS	SH	G	A	PTS	GWG	GB	CT
2010	3-0	0	0	0	0	0	2	1
Totals	3-0	0	0	0	0	0	2	1



Abby Ananian
Sophomore • 5-8 • Midfield
Belmont, Mass. • Belmont

21

2011: Played in four games with one start...Picked up one ground ball...**High School/Personal:** Two-time All-State, All-League First Team, and *Boston Herald* All-Star... Twice named team's Most Valuable Player... Earned Academic All-American honors as a junior.. Graduated as Belmont's all-time leader in points (308)...Lettered four years in both lacrosse and field hockey...Born December 4, 1991...Social science major.

YEAR	GP-GS	SH	G	A	PTS	GWG	GB	CT
2011	4-1	0	0	0	0	0	1	0
Totals	4-1	0	0	0	0	0	1	0



Junior Heather Olson started 16 games on defense last season picking up nine ground balls and causing eight turnovers.



Michele Granger
Sophomore • 5-4 • Midfield/Attack
Allendale, N.J. • Northern Highlands

34

2011: Played in six games making one start...Picked up one ground ball...**High School/Personal:** Named First Team All-League and Second Team All-County as a senior...Captained team senior year...Earned Second Team All-County as a junior...Born November 4, 1990...Humanities major.

YEAR	GP-GS	SH	G	A	PTS	GWG	GB	CT
2011	6-1	0	0	0	0	0	1	0
Totals	6-1	0	0	0	0	0	1	0

SOPHOMORES



Brittany Hanrahan
Sophomore • 5-10 • Defense
Hatfield, Pa. • North Penn

19

2011: Played in 14 games making eight starts...**High School/Personal:** Two-time All-American Honorable Mention and First Team All-League selection...Named team MVP and captain as a senior... Earned All-Philadelphia Lacrosse Third Team as a junior...Earned Coaches Choice Award as a sophomore...Born November 4,

1990...Humanities major.

YEAR	GP-GS	SH	G	A	PTS	GWG	GB	CT
2011	14-8	0	0	0	0	0	0	0
Totals	14-8	0	0	0	0	0	0	0



Sophomore Brittany Hanrahan established herself on the defensive end making eight starts in 2012.



Senior Julie Mineweaser has started all 50 games in the previous three seasons in the midfield.



Jessica Nawojski
Sophomore • 5-2 • Attack
Malvern, Pa. • Great Valley

12

2011: Played in seven games...**High School/Personal:** Named First Team All-League and All-Area as a senior...Earned Second Team All-League honors as a junior...Helped team to a 21-3 record in senior year...Lettered four years in both lacrosse and field hockey...Born November 4, 1990...Humanities major.

YEAR	GP-GS	SH	G	A	PTS	GWG	GB	CT
2011	7-0	0	0	0	0	0	0	0
Totals	7-0	0	0	0	0	0	0	0



Kaitlyn McSwiggan
Sophomore • 5-8 • Defense
Allendale, N.J. • Immaculate Heart Academy

26

2011: Appeared in 10 games making three starts...Picked up one ground ball...**High School/Personal:** Captained team as a senior...Named First Team All-Suburban and Second Team All-County as a senior...Earned All-League Stars Division honorable mention as a junior... Born November 4, 1990...Humanities major.

YEAR	GP-GS	SH	G	A	PTS	GWG	GB	CT
2011	10-3	0	0	0	0	0	1	0
Totals	10-3	0	0	0	0	0	1	0



SOPHOMORES



Val Paolucci
Sophomore • 5-5 • Midfield/Defense
Swarthmore, Pa. • Springfield

29

2011: Played in 12 contests...Scored 10 goals on 20 shots...Scored two goals in wins over Saint Mary's and La Salle...**High School/Personal:** Earned All-American, Academic All-American, First Team All-Delco and All-Central as a senior...Scored 100th goal in senior season...Two-time All-Delco Honorable Mention... Helped team earn three district titles, a league championship, and a trip to state finals...Born November 4, 1990...Humanities major.

YEAR	GP-GS	SH	G	A	PTS	GWG	GB	CT
2011	12-0	20	10	0	10	1	4	0
Totals	12-0	20	10	0	10	1	4	0



Meghan Watkin
Sophomore • 5-3 • Midfield/Defense
West Chester, Pa. • W.C. Bayard Rustin

28

2011: Played in 11 games...Picked up three ground balls and caused one turnover...**High School/Personal:** Earned Academic All-American honors as a senior...Captained team in senior season...Lettered four years in lacrosse and three in soccer...Born November 4, 1990... Humanities major.

YEAR	GP-GS	SH	G	A	PTS	GWG	GB	CT
2011	11-0	0	0	0	0	0	3	1
Totals	11-0	0	0	0	0	0	3	1



Sophomore Val Paolucci made an impact as a freshman firing 20 shots resulting in 10 goals.

NEWCOMERS



Molly Curcio
Freshman • 5-6 • Defense
Lancaster, Pa. • Manheim Township

6

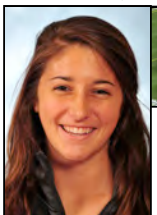
High School/Personal: Earned First Team All-League as a junior and senior...Team was district, league and section champions junior and senior season and section Champions as a sophomore...Part of a team that went 75-11 in four years...Born February 18, 1993...Majoring in sports marketing.



Allison Heath
Sophomore • 5-8 • Defense
Newtown Square, Pa. • Radnor

27

High School/Personal: Transfer from Monmouth University...Born June 8, 1991...Majoring in elementary education.



Julia Falcone
Freshman • 5-6 • Midfield
West Chester, Pa. • West Chester East

14

High School/Personal: Earned Second Team All-Ches-Mont as a senior...Scored 74 goals in her career...Captain of the lacrosse and soccer teams her senior year...Born August 11, 1992...Majoring in food marketing.



Hannah Hutchins
Freshman • 5-7 • Midfield
Weston, Ct. • Weston

7

High School/Personal: Earned Senior All-Star team, All-State, and All SWC honors as a senior...Named All Area MVP and Offensive MVP helping her team to the Class S State Championship...As a junior, named defensive MVP while earning All Area team and Second Team All SWC...Born March 11, 1993...Majoring in business.

NEWCOMERS



Nora McGeever
Freshman • 5-8 • Goalkeeper
Drexel Hill, Pa. • Archbishop Carroll

High School/Personal: Started at goalie for three Philadelphia Catholic League and District 12 Championship teams...Earned First Team All-Catholic, Second Team All-Delco, Second Team All-Main Line, and was a U.S. Lacrosse All-American as a senior...As a junior, was named Third Team All-Catholic Honorable Mention and Second Team All-

Main Line...Served as team captain senior year...Born April 21, 1993...Majoring in food marketing.

31



Hallie Pickard
Freshman • 5-9 • Midfield/Defense
Short Hills, N.J. • Millburn

High School/Personal: First Team All-Conference as a junior...Named Second Team All-Conference and nominated for Athlete of the Year as a senior...Born October 9, 1992...Majoring in marketing.

25



Gianna Minuttillo
Freshman • 5-5 • Attack
Hillsborough, N.J. • Hillsborough

High School/Personal: Selected All-American Honorable Mention, First Team All-Conference, and First Team All-State as a senior...Also won county and conference championships while captaining the team...Earned MVP at the county tournament...Totaled 179 goals in her career...Born February 3, 1993...Majoring in english.

10



Lauren Young
Freshman • 5-5 • Attack
Mullica Hill, N.J. • Clearview Regional

High School/Personal: Earned Academic All-American and All Conference as a junior and senior...Selected to the First Team All South Jersey, All Group 3, and All-Conference as a junior...November 19, 1992...Majoring in biology.

5





2011 REVIEW

The 2011 Saint Joseph's women's lacrosse team showed great improvement from its previous season in which it lost several starters to injury. Although the squad was young, with just three seniors, it finished with an overall record of 5-11 compared to 2-14 in 2010.

The Hawks started the season with a loss to Drexel at home but redeemed themselves with a 12-5 win on the road against Wagner. The Hawks jumped out to a 7-0 lead and the Seahawks retaliated with a run of their own, 4-0, but SJU outscored the Wagner, 5-1, in the remainder of the contest to take the win. Julie Mineweaser and Jen Peters led the Hawks with three goals apiece. Junior Carly Kindbom had five caused turnovers while goalkeeper Kaitlin LaBarbera made nine saves between the pipes.

After falling to Lehigh, 16-3, on the road, the squad returned home to defeat Saint Francis (Pa.), 10-6 in its first-ever meeting with the Red Flash. Four players scored two goals apiece to lead the Hawks to victory. Sophomore Gwen Nihill had a pair of goals and assisted on two, while LaBarbera made 10 saves in net.

The Hawks dropped their next home game to Rutgers and then hit the road to defeat Monmouth, 11-6. Peters and Grace Dinn led SJU with three goals each while Nihill and Kindbom added two scores apiece.

The squad returned home to drop a hard-fought match to Old Dominion, 11-10. The Hawks led 5-2 with 43:45 to go but after each team scored a goal, the Monarchs went on a 6-0 run to lead 9-6. The Hawks fought their way back from the three-goal deficit, outscoring the Monarchs 4-1 over the next 17:37 to knot the game at 10-10, but ODU maintained possession and scored with 21 seconds on the clock to take the win. Peters scored the game-tying goal and led SJU with four goals.

The Hawks dropped their next match at Delaware and began a three-game homestand. The squad won two one-point games with an 8-7 victory over Saint Mary's and a 7-6 win in its first conference game over La Salle.

Freshman Val Paolucci scored her first career goal and the game-winner against Saint Mary's and had two more scores



Kaitlin LaBarbera finished her career on Hawk Hill ranked 6th all-time in saves with 213 and 4th in goals against average with 11.60.

against La Salle. Alana Glanell also had two goals against the Explorers, including the game-winning goal,

Saint Joseph's then dropped two one-point games to Temple, 12-11, and St. Bonaventure, 11-10. Temple outshot Saint Joseph's, 14-8, in the first half, but the Hawks converted all but one of those shots for an even, 7-7, score at halftime. SJU opened the second half with three consecutive scores to take a 10-7 lead and after an Owl goal, McDevitt pushed the lead back to three. But Temple scored four goals and then won the draw and maintained possession for the win. McDevitt had a career-high six points with four goals and two assists against the Owls and tallied two goals against the Bonnies.

Grace Dinn scored three goals and had two assists in a loss to Duquesne and had three goals and a helper as the Hawks fell to Richmond. LaBarbera had a career-high 14 saves in the Hawks final road game against the Spiders.

Saint Joseph's fell to George Washington and dropped its final match of the season to 13th-ranked Massachusetts, 18-4, as it honored three graduating seniors - Kaitlin LaBarbera, Christine Readinger and Francesca Volpe.

TEAM AWARDS

MOST OUTSTANDING PERFORMER: Gwen Nihill

SCHOLAR-ATHLETE AWARD: Kaitlin LaBarbera

VASQUEZ AWARD: Jen Peters

DORIE LEAHY AWARD: Christine Readinger

ACADEMIC AWARD: Meghan Watkin

OFFENSIVE PLAYER OF THE YEAR: Jen Peters, Grace Dinn

DEFENSIVE PLAYER OF THE YEAR: Christine Readinger, Elizabeth Fox

COACHES AWARD: Gwen Nihill

OTHER AWARDS

ATLANTIC 10 ALL-CONFERENCE SECOND TEAM: Elizabeth Fox

ATLANTIC 10 ACADEMIC ALL-CONFERENCE: Elizabeth Fox, Kaitlin LaBarbera

2012 STATISTICS



SAINT JOSEPH'S UNIVERSITY FINAL 2011 WOMEN'S LACROSSE STATISTICS (OVERALL: 5-11 / ATLANTIC 10: 1-6)

Name	GP-GS	G	A	Pts	Sh	Shot%	SOG	SOG%	GW	FPG-FPS	GB	DC	T/O	CT	Fouls
Grace Dinn	16-16	30	11	41	97	.309	60	.619	0	11-24	22	17	36	7	12
Jen Peters	14-13	26	2	28	59	.441	43	.729	2	3-10	10	19	17	2	3
Meghan McDevitt	16-15	15	17	32	40	.375	32	.800	0	0-7	13	8	30	3	1
Val Paolucci	12-0	10	0	10	20	.500	15	.750	1	1-5	4	1	9	0	0
Gwen Nihill	16-16	8	5	13	34	.235	19	.559	0	0-4	32	8	31	9	5
Alana Glanell	14-6	6	13	19	15	.400	10	.667	1	2-4	13	2	16	0	4
Carly Kindbom	16-16	5	1	6	14	.357	8	.571	0	0-1	24	9	14	12	13
Julie Mineweaser	16-16	3	1	4	13	.231	9	.692	1	0-3	25	7	13	15	10
Elizabeth Fox	16-16	3	0	3	5	.600	4	.800	0	0-0	42	17	15	30	20
Francesca Volpe	12-5	2	1	3	9	.222	6	.667	0	0-0	2	1	12	2	1
Nora McGuire	12-0	1	3	4	7	.143	4	.571	0	0-0	7	0	5	2	0
Abby Ananian	4-1	0	0	0	0	.000	0	.000	0	0-0	1	0	2	0	1
Alisha Aquilino	4-0	0	0	0	0	.000	0	.000	0	0-0	2	0	1	0	0
Michele Granger	6-1	0	0	0	0	.000	0	.000	0	0-0	1	0	1	0	0
Maggie Mauer	1-0	0	0	0	0	.000	0	.000	0	0-0	1	0	0	0	0
Kathryn Daisy	1-0	0	0	0	0	.000	0	.000	0	0-0	0	0	0	0	0
Alexa Matthews	14-0	0	0	0	0	.000	0	.000	0	0-0	5	1	6	3	6
Ashley Scherer	2-0	0	0	0	0	.000	0	.000	0	0-0	0	0	0	0	0
Kaitlyn McSwiggan	10-3	0	0	0	0	.000	0	.000	0	0-0	1	2	2	0	0
Jessica Nawojski	7-0	0	0	0	0	.000	0	.000	0	0-0	0	0	4	0	0
Kaitlin LaBarbera	16-16	0	0	0	0	.000	0	.000	0	0-0	26	0	7	8	1
Meghan Watkin	11-0	0	0	0	0	.000	0	.000	0	0-0	3	1	3	1	0
Brittany Hanrahan	14-8	0	0	0	0	.000	0	.000	0	0-0	0	7	2	0	1
Heather Olson	16-16	0	0	0	0	.000	0	.000	0	0-0	9	1	8	8	11
Christine Readinger	12-12	0	0	0	0	.000	0	.000	0	0-0	18	4	5	8	6
Alli MacDonald	16-16	0	0	0	0	.000	0	.000	0	0-0	29	0	10	19	8
Gillian Murphy	1-0	0	0	0	0	.000	0	.000	0	0-0	0	0	0	0	0
TOTAL	16	109	54	163	313	.348	210	.671	5	17-58	290	112	250	129	301
OPPONENTS	16	172	7	239	378	.455	301	.796	11	47-87	297	200	282	122	282

Name	GP-GS	MIN	GA	GAA	Saves	Pct	W	L	Shots Faced
Alisha Aquilino	3-0	67:25	11	9.79	6	.353	0	0	25
Kaitlin LaBarbera	16-16	892:35	161	10.82	123	.433	5	11	353
TOTAL	16	960:00	172	10.75	129	.429	5	11	378
OPPONENTS	16	960:00	109	6.81	101	.481	11	5	313

2011 WOMEN'S LACROSSE GAME-BY-GAME RESULTS: Record: 5-11 Home: 3-6 Away: 2-4 Neutral: 0-1

Date	Opponent	Score	SJU Goals Leader	SHOTS SJU-Opp	GB SJU-Opp	TO SJU-Opp
2/23	DREXEL	14-2 L	Peters (2)	10-22	11-16	16-15
2/26	at Wagner	12-5 W	Mineweaser, Peters (3)	39-16	19-13	14-24
3/2	at Lehigh	16-3 L	Dinn, Fox, Peters (1)	14-30	16-16	20-21
3/6	SAINT FRANCIS (Pa.)	10-6 W	Dinn, McDevitt, Nihill, Peters (2)	22-19	25-21	14-18
3/9	RUTGERS	12-4 L	Dinn, Peters (2)	10-14	24-17	19-20
3/13	at Monmouth	11-6 W	Dinn, Peters (3)	26-21	17-20	12-18
3/19	OLD DOMINION	11-10 L	Peters (4)	22-25	17-19	13-14
3/23	at Delaware	13-3 L	Dinn, Fox, Peters (1)	16-23	4-13	21-15
3/26	SAINT MARY'S	8-7 W	Dinn, Paolucci, Peters (2)	26-24	29-25	19-19
4/1	LA SALLE	7-6 W	Glanell, Paolucci, Peters (2)	27-17	20-16	10-18
4/3	TEMPLE	12-11 L	McDevitt (4)	21-24	15-15	8-11
4/8	vs. St. Bonaventure (at Alfred)	11-10 L	Dinn, Glanell, McDevitt, Peters (2)	26-26	10-25	16-24
4/10	at Duquesne	14-5 L	Dinn (3)	14-34	17-17	21-22
4/15	at Richmond	12-6 L	Dinn (3)	13-29	30-31	22-20
4/17	GEORGE WASHINGTON	9-3 L	Paolucci (2)	13-18	25-19	16-13
4/23	#13 MASSACHUSETTS	14-8 L	Dinn (2)	14-26	11-14	9-10

Home Games in CAPS * Atlantic 10 Conference Game

SCORE BY HALVES	1st	2nd	TOTAL
SJU	58	51	109
OPPONENTS	87	85	172



2011 ATLANTIC 10 REVIEW

2011 FINAL STANDINGS

Team	A-10			Overall		
	W	L	PCT.	W	L	PCT.
1. Massachusetts*	7	0	1.000	17	3	.850
2. Richmond	6	1	.857	10	9	.526
3. Temple	5	2	.714	7	10	.412
4. Duquesne	4	3	.571	11	7	.611
5. George Washington	3	4	.429	6	11	.353
6. St. Bonaventure	2	5	.286	6	9	.400
7. Saint Joseph's	1	6	.143	5	11	.312
8. La Salle	0	7	.000	4	12	.250

* – A-10 Tournament Champion

2011 A-10 SEMIFINALS (Philadelphia, Pa.)

#2 Richmond 12, #3 Temple 8

#1 Massachusetts 16, #4 Duquesne 8

2011 A-10 CHAMPIONSHIP (Philadelphia, Pa.)

#1 Massachusetts 16, #2 Richmond 12

2011 ATLANTIC 10 ALL-TOURNAMENT TEAM

Katie Rekart	Duquesne
Liz Walker (GK)	Duquesne
Katie Ferris	Massachusetts
Ali Houlis	Massachusetts
Jackie Lyons	Massachusetts
Jesse O'Donnell	Massachusetts
Riley Perry	Massachusetts
Taylor Blazer	Richmond
Mary Flowers	Richmond
Danielle Schaevez	Richmond
Gabi Wiegand	Richmond
Charlotte Swavola	Temple

2011 ALL-CONFERENCE

Offensive Player of the Year: Jackie Lyons (UM)
 Midfielder of the Year: Mary Flowers (UR)
 Defensive Player of the Year: Katie Florence (UM)
 Rookie of the Year: Katie Ferris (UM)
 Coach of the Year: Angela McMahon (UM)
 Student-Athlete of the Year: Riley Perry (UM)

ALL-CONFERENCE FIRST TEAM

Meredith Dunn	Duquesne	M	So.
Amy Gladfelter	Duquesne	D	Jr.
Katie Rekart	Duquesne	A	Sr.
Katie Ferris	Massachusetts	A	Fr.
Katie Florence	Massachusetts	GK	Jr.
Ali Houlis	Massachusetts	D	Jr.
Jackie Lyons	Massachusetts	A	Sr.
Taylor Blazer	Richmond	D	Fr.
Mary Flowers	Richmond	M	Jr.
Christine Hanley	St. Bonaventure	M	Sr.
Jill Remick	St. Bonaventure	D	Sr.
Charlotte Swavola	Temple	A	So.

ALL-CONFERENCE SECOND TEAM

Liz Walker	Duquesne	GK	Jr.
Sarah Phillips	George Washington	M	Jr.
Hilary Quinn	George Washington	D	Jr.
Dayna Defiese	Massachusetts	M	Jr.
Riley Perry	Massachusetts	D	Jr.
Haley Smith	Massachusetts	M	Sr.
Elizabeth Fox	Saint Joseph's	D	Jr.
Bria Eulitt	Richmond	D	Sr.
Caitlin Fifield	Richmond	M	Jr.
Dani Schaevez	Richmond	A	Sr.
Gabi Wiegand	Richmond	A	So.
Cara Callahan	St. Bonaventure	A	Fr.

2011 INDIVIDUAL STATISTICAL LEADERS

GOALS PER GAME

Name (School)	GP	Goals	G/GM
1. Katie Ferris (UM)	18	56	3.11
2. Katie Rekart (DUQ)	18	50	2.78
3. Christine Hanley (SBU)	15	38	2.53
Cara Callahan (SBU)	15	38	2.53
5. Mary Flowers (UR)	16	38	2.38
Charlotte Swavola (TU)	16	38	2.38
7. Meredith Dunn (DUQ)	18	42	2.33
8. Sam Stevenson (UR)	11	25	2.27
9. Melanie Sarcinello (LAS)	16	36	2.25
10. Danielle Drabin (SBU)	15	32	2.13

GOALS AGAINST AVERAGE

Name (School)	GP	GA	MIN	GAA
1. Katie Florence (UM)	20	161	1097:19	8.80
2. Liz Walker (DUQ)	18	157	1043:28	9.03
3. Kaitlin LaBarbera (SJU)	16	161	892:35	10.82
4. Megan Corliss (LAS)	16	181	905:13	12.00
5. Liz Hoffman (GW)	17	184	912:35	12.10
6. Victoria Roebuck (UR)	19	229	1102:17	12.47
7. Tess Bishop (UM)	17	201	965:25	12.49
8. Karly Kocis (SBU)	15	174	728:14	14.34

ALL-ROOKIE TEAM

Haley Marafioti	Duquesne	A
Caitlin Prince	Duquesne	A
Jordy Bathras	George Washington	A
Samantha Tulske	La Salle	M
Katie Ferris	Massachusetts	A
Tanner Guarino	Massachusetts	M
Courtney Mcgrath	Massachusetts	M
Taylor Blazer	Richmond	D
Hayley Ross	Richmond	M
Cara Callahan	St. Bonaventure	A
Karly Kocis	St. Bonaventure	A
Jaymie Tabor	Temple	A

ACADEMIC ALL-CONFERENCE

Aubrey Green	Duquesne
Katie Rekart	Duquesne
Mia Breheny	George Washington
Sarah Phillips	George Washington
Melanie Sarcinello	La Salle
Riley Perry	Massachusetts
Elizabeth Fox	Saint Joseph's
Kaitlin LaBarbera	Saint Joseph's
Catherine Greene	St. Bonaventure
Jill Remick	St. Bonaventure
Missy Schweitzer	Temple
Ann Stouffer	Temple

ATLANTIC 10 CONFERENCE



On March 2, 1975, the idea of what is now the Atlantic 10 Conference was conceived. What started as an eight-school, men's basketball-only affiliation has grown into a 14-university, 21-sport league that is universally hailed as one of the best conferences in the country.

That growth and prominence is a direct result of the ideals and commitments of the member institutions of the Atlantic 10 - the University of Dayton, Duquesne University, Fordham University, The George Washington University, La Salle University, University of Massachusetts, University of North Carolina at Charlotte, University of Rhode Island, University of Richmond, St. Bonaventure University, Saint Joseph's University, Saint Louis University, Temple University, and Xavier University.

The 14 member institutions of the A-10 are united and strengthened by their diversity. Each is extraordinary in its educational mission, whether of a Catholic faith, a private university or a land grant institution. The varied pursuits of each member prove that there are many threads that weave the fabric for a great conference.

The presidents and chancellors of Atlantic 10 institutions, in conjunction with Atlantic 10 Commissioner Bernadette V. McGlade, have made a strong commitment to making the academic and athletics equation a successful one. Over the years, the league membership has strived to better recognize the academic accomplishments of its student-athletes. The Commissioner's Honor Roll, which cites every Atlantic 10 student-athlete with a 3.5 grade point average or better, recognized 1,162 student-athletes in the Fall 2008 while 1,164 were named to the Spring 2009 Honor Roll.

The league sponsors Academic All-Conference teams in each of its sports and honors one student-athlete per sport as the A-10 Student-Athlete of the Year. Moreover, the Atlantic 10 provides four postgraduate scholarship grants to qualified student-athletes. In 2000-09, 182 student-athletes earned Academic All-Conference recognition, while Charlotte's Lamarra Currie, Christa Dominick of La Salle, St. Bonaventure's Katelyn Murray and David Zenk of George

Washington received postgraduate scholarship grants.

The Atlantic 10 Conference had 50 teams among the 767 Division I sports teams honored by the NCAA with public recognition awards for their latest multi-year Academic Progress Rate scores. These teams posted multi-year APR scores in the top 10 percent of all squads in their respective sports. This represents an increase of 16 teams from a year ago and ranked the league fifth among 31 Division I Conferences. In 19 of the 21 sports sponsored by the Atlantic 10, the league's APR was at or above the conference average nationally according to the most recent data released by the NCAA. Moreover, 75 A-10 teams attained a perfect score in the NCAA's Graduation Success Rate Report.

The Atlantic 10 Conference, with a total population of nearly 74 million people within its geographic footprint of eight states and the District of Columbia, will crown champions in 21 sports this season: baseball, men's and women's basketball, men's and women's cross country, field hockey, men's golf, women's lacrosse, men's and women's indoor and outdoor track & field, women's rowing, men's and women's soccer, softball, men's and women's swimming & diving, men's and women's tennis, and women's volleyball.

Atlantic 10 Conference Staff Directory

Atlantic 10 Conference
11827 Canon Blvd., Suite 200
Newport News, VA 23606
(757) 706-3040
Fax: (757) 706-3042
www.atlantic10.org

Commissioner
Bernadette V. McGlade

Associate Commissioner
Ed Pasque

Associate Commissioner
Debbie Richardson

Associate Commissioner
Megan Kahn

Associate Commissioner
Jay DeFrusco

Assistant Commissioner
Jill Redmond

Director of Media Relations
Drew Dickerson

Director of Championships
Lucas Feller

Associate Director of Communications
Melissa Kristofak

Advanced Media and Communications Assistant
Molly Gallagher

Administration/Operations Assistant
Pete Woody



Helene Tursi (09') was named to the Atlantic 10 All-Conference First Team.



Suzy Herlihy (09') was named the Atlantic 10 Defensive Player of the Year.

www.sjuhawks.com



YEARLY RECORDS

Season	OVERALL			ATLANTIC 10			Finish	Coach	Postseason
	W	L	Pct.	W	L	Pct.			
1993	3	3	.500	-	-	—	—	Denise Liggett	
1994	6	7	.461	-	-	—	—	Denise Liggett	
1995	4	13	.236	-	-	—	—	Denise Liggett	
1996	8	6	.571	-	-	—	—	Denise Liggett	
1997	4	10	.286	-	-	—	—	Denise Liggett	
1998	2	13	.133	-	-	—	—	Denise Liggett	
1999	3	11	.215	1	4	.200	6th	Denise Roessler	
2000	7	8	.467	2	4	.333	5th	Denise Roessler	
2001	5	10	.333	2	3	.400	4th	Denise Roessler	Atlantic 10 Tournament
2002	3	10	.231	2	5	.286	T-5th	Denise Roessler	
2003	4	11	.267	0	7	.000	8th	Denise Roessler	
2004	8	6	.571	3	4	.429	T-5th	Denise Roessler	
2005	5	10	.333	1	6	.143	7th	Denise Roessler	
2006	5	11	.313	1	6	.143	T-7th	Denise Roessler	
2007	7	9	.438	2	5	.286	T-6th	Denise Roessler	
2008	7	9	.438	2	5	.286	T-5th	Denise Roessler	
2009	10	8	.556	5	2	.714	T-2nd	Denise Roessler	Atlantic 10 Finalists
2010	2	14	.125	0	7	.000	8th	Denise Roessler	
2011	5	11	.313	1	6	.143	8th	Denise Roessler	
TOTAL	100	168	.373	22	64	.255			

YEAR	GOALS	ASSISTS
2011	Dinn30	McDevitt17
2010	Dinn38	Glanell16
2009	Martino57	Martino19
2008	Martino45	McCool21
2007	Martino31	McCool15
2006	O'Connell42	McCool20
2005	O'Connell45	McCool9
2004	Teklinsky43	Teklinsky10
2003	Butler31	Dymarczyk11
2002	Teklinsky31	Hungate11
2001	Smith51	Hungate24
2000	Smith43	Hungate22
1999	Chicarelli23	Meah, Walsh6
1998	Maher17	Maher7
1997	Feite42	Feite23
1996	Feite51	Feite19
1995	Feite49	Huffman16
1994	Vizza30	Feite16
1993	Huffman28	Huffman4

YEAR	POINTS	SHOTS
2011	Dinn41	Dinn97
2010	Dinn42	Dinn79
2009	Martino76	Martino132
2008	Martino53	Martino107
2007	Martino37	Westlake66
2006	O'Connell52	O'Connell95
2005	O'Connell45	O'Connell90
2004	Teklinsky53	Teklinsky102
2003	Butler/Teklinsky36	Butler92
2002	Teklinsky36	Teklinsky79
2001	Smith60	Smith120
2000	Hungate53	Smith95
1999	Chicarelli23	Moltz51
1998	Maher24	Smith51
1997	Feite65	Feite100
1996	Feite70	Feite100
1995	Feite63	Feite113
1994	Feite47	Huffman65
1993	Huffman32	Huffman48

YEAR	WINS	SAVES
2011	LaBarbera5	LaBarbera123
2010	Aquilino2	LaBarbera72
2009	Herlihy10	Herlihy156
2008	Herlihy7	Herlihy154
2007	Herlihy7	Herlihy152
2006	Magan5	Magan101
2005	Huff5	Huff140
2004	Huff8	Huff157
2003	Huff4	Huff124
2002	Three tied with1	Huff48
2001	Bradley5	Bradley143
2000	Bradley7	Bradley124
1999	Bradley3	Bradley99
1998	Meyers2	Meyers216
1997	Meyers3	Meyers154
1996	Meyers8	Meyers167
1995	Teti4	Teti175
1994	Campbell4	Campbell116
1993	Campbell2	Campbell43

CAUSED TURNOVERS
Fox30
MacDonald13
Lyons27
McCool21
Renninger14
O'Connell12
Van Wert21
Van Wert17
Burke28
Blank, Burke25
n/a
Hieber25
n/a
Constantine46
Grant7
Frost33
n/a
n/a
n/a

SAVE PCT
LaBarbera433
Aquilino462
Herlihy513
Herlihy520
Herlihy517
Magan352
Huff450
Huff545
Huff498
Huff505
Bradley422
Bradley426
Garrick490
Meyers548
Meyers556
Meyers601
Teti532
Campbell566
Campbell483



Shannon Feite '97 holds Saint Joseph's records for career points (243), goals (171) and assists (72).

GAA
Aquilino9.79
LaBarbera11.92
Herlihy8.77
Herlihy9.46
Herlihy8.69
Magan12.92
Huff11.50
Huff9.91
Huff8.24
Bradley9.41
Bradley13.01
Bradley12.17
Garrick11.26
Meyers11.86
Meyers11.13
Meyers8.99
Teti12.74
Campbell9.70
Campbell7.66

CAREER RECORDS



GAMES PLAYED

1. Jenna Martino, 2007-10	.66
Abby Renninger, 2005-09	.66
2. Jessica Westlake, 2006-2009	.65
3. Jontell Lyons, 2006-2009	.64
4. Christina Colangelo, 2005-08	.63
Lindsey-Kate McCool, 2005-08	.63
6. Jen Fletcher, 2004-07	.61
Megan O'Donnell, 2004-07	.61
Christine Readinger 2008-11	.61
9. Bernadette Smith, 1998-01	.59
Megan Maher, 1995-98	.59

GOALS

1. Shannon Feite, 1994-97	.171
2. Jenna Martino, 2007-10	.154
3. Kerry O'Connell, 2003-06	.141
4. Bernadette Smith, 1998-01	.124
5. Kristin Teklinsky, 2001-04	.117
6. Margot Grant, 1994-97	.90
7. Jessica Huffman, 1993-95	.88
8. Carolyn Wood, 1995-97	.79
9. Grace Dinn, 2009-11	.77
Brett Dymarczyk, 2000-03	.77

ASSISTS

1. Shannon Feite, 1994-97	.72
2. Lindsey-Kate McCool, 2005-08	.65
3. Shannon Hungate, 2000-03	.57
4. Jenna Martino, 2007-10	.38
5. Margot Grant, 1994-97	.31
6. Kristin Teklinsky, 2001-04	.30
7. Alana Glanell, 2009-11	.29
Jessica Huffman, 1993-95	.29
Carolyn Wood, 1995-97	.29
10. Kerry O'Connell, 2003-06	.28

POINTS

1. Shannon Feite, 1994-97	.243
2. Jenna Martino, 2007-10	.192
3. Kerry O'Connell, 2003-06	.169
4. Kristin Teklinsky, 2001-04	.147
5. Bernadette Smith, 1998-01	.144
6. Lindsey-Kate McCool, 2005-08	.140
7. Margot Grant, 1994-97	.121
8. Jessica Huffman, 1993-95	.117
Shannon Hungate, 2000-03	.117
10. Carolyn Wood, 1995-97	.108

SHOTS

1. Shannon Feite, 1994-97	.373
2. Jenna Martino, 2007-10	.370
3. Kristin Teklinsky, 2001-04	.309
4. Bernadette Smith, 1998-01	.308
5. Kerry O'Connell, 2003-06	.294
6. Brett Dymarczyk, 2000-03	.258
7. Grace Dinn, 2009-11	.203
8. Jen Peters, 2009-11	.186
9. Christina Colangelo, 2005-08	.174
10. Jessica Huffman, 1993-95	.173

GROUND BALLS

1. Lindsey-Kate McCool, 2005-08	.151
2. Barb Constantine, 1996-99	.149
Nora Meah, 1996-99	.149
4. Roslyn Frost, 1993-96	.131
5. Suzy Herlihy, 2007-2009	.126
6. Christina Colangelo, 2005-08	.125
7. Kerry O'Connell, 2003-06	.129
8. Shannon Feite, 1994-97	.122
9. Megan Gresh, 2001-04	.119
10. Carolyn Wood, 1995-97	.99

CAUSED TURNOVERS

1. Barb Constantine, 1996-99	.66
2. Abby Renninger, 2005-09	.65
3. Kathleen Burke, 2000-03	.62
4. Lindsey-Kate McCool, 2005-08	.56
5. Michelle Van Wert, 2002-05	.50
6. Anne Vandergrift, 1996-99	.48

SAVES

1. Brandy Meyers, 1995-98	.627
2. Courtney Huff, 2002-05	.469
3. Suzy Herlihy, 2007-2009	.462
4. Lauren Bradley, 1999-02	.405
5. Angela Teti, 1994-97	.349
6. Kaitlin LaBarbera, 2008-11	.213
7. Laurie Campbell, 1993-94	.159

SAVE PERCENTAGE

1. Laurie Campbell, 1993-94	.569
2. Brandy Meyers, 1995-98	.550
3. Angela Teti, 1994-97	.536
4. Courtney Huff, 2002-05	.516
5. Suzy Herlihy, 2007-2009	.510
6. Lauren Bradley, 1999-02	.444

GOALS AGAINST AVERAGE

1. Laurie Campbell, 1993-94	.878
2. Suzy Herlihy, 2007-2009	.897
3. Courtney Huff, 2002-05	.10.14
4. Kaitlin LaBarbera, 2008-11	.11.60
5. Lauren Bradley, 1999-02	.11.83
6. Brandy Meyers, 1995-98	.11.92
7. Sarah Magan, 2004-06	.12.83

BOLD indicates current student-athlete



Lindsey-Kate McCool '08 graduated as SJU's all-time leader in ground balls (151) and is tied with Christina Colangelo '08 in games played (63).

TEAM RECORDS

GAME:

Most Goals	.26, vs. La Salle, 4/16/94
Most Assists	.19, vs. La Salle, 4/16/94
Most Shots	.51, vs. St. Bonaventure, 4/16/00
Most Saves	.23, vs. Virginia Tech, 3/14/96

SEASON:

Most Goals	.208 (2009)
Fewest Goals	.65 (1993)
Most Assists	.77 (2009)
Fewest Assists	.18 (1993)
Most Points	.285 (2009)
Fewest Points	.83 (1993)
Most Shots	.538 (2009)
Most Saves	.265 (1995)
Goals Against Average	.7.66 (1993)

INDIVIDUAL RECORDS

GAME:

Most Goals	.10
Shannon Feite vs. Notre Dame, 4/13/97	
Most Assists	.6, twice
last by Lindsey-Kate McCool vs. St. Bona., 3/30/08	
Most Points	.11, twice
last by Shannon Hungate vs La Salle 4/27/00	
Most Saves	.21
Angela Teti vs. Georgetown, 4/5/94	

SEASON:

Most Goals	.57
Jenna Martino (2009)	
Most Assists	.24
Shannon Hungate (2001)	
Most Points	.76
Jenna Martino (2009)	
Most Shots	.132
Jenna Martino (2009)	
Most Groundballs	.60
Kerry O'Connell (2006)	
Most Saves	.216
Brandy Meyers (1998)	
Most Victories	.10
Suzy Herlihy (2009)	
Goals Against Average	.7.66
Laurie Campbell (1993)	
Save Percentage	.601
Brandy Meyers (1996)	

CAREER:

Most Games	.66
Abby Renninger ('09), Jenna Martino ('10)	
Most Goals	.171
Shannon Feite (1994-97)	
Most Assists	.72
Shannon Feite (1994-97)	
Most Points	.243
Shannon Feite (1994-97)	
Most Shots	.373
Shannon Feite (1994-97)	
Most Ground Balls	.151
Lindsey Kate McCool (2005-08)	
Most Saves	.627
Brandy Meyers (1995-98)	
Most Wins	.24
Suzy Herlihy (2007-09)	
Goals Against Average	.8.78
Laurie Campbell (1993-94)	
Save Percentage	.569
Laurie Campbell (1993-94)	



SINGLE SEASON RECORDS



Shannon Hungate '02



Courtney Huff '05

The Hawk Will Never Die!

GOALS

1. Jenna Martino, 200957
2. Bernadette Smith 200151
- Shannon Feite, 199651
4. Shannon Feite, 199549
5. Jenna Martino, 200845
- Kerry O'Connell, 200545
7. Kristen Teklinsky, 200443
- Bernadette Smith, 200043
9. Kerry O'Connell, 200642
- Shannon Feite, 199742

ASSISTS

1. Shannon Hungate, 200124
2. Shannon Feite, 199723
3. Shannon Hungate, 200022
4. Lindsey-Kate McCool, 200821
5. Lindsey-Kate McCool, 200620
6. Jenna Martino, 200919
- Shannon Feite, 199619
8. **Meghan McDevitt, 201117**
9. **Alana Glanell, 201016**
- Jessica Huffman, 199516
- Shannon Feite, 199416

POINTS

1. Jenna Martino, 200976
2. Shannon Feite, 199670
3. Shannon Feite, 199765
4. Shannon Feite, 199563
5. Bernadette Smith, 200160
6. Jenna Martino, 200853
- Kristen Teklinsky, 200453
- Shannon Hungate, 200053
9. Kerry O'Connell, 200652
10. Kerry O'Connell, 200449
- Bernadette Smith, 200049

SHOTS

1. Jenna Martino, 2009132
2. Bernadette Smith, 2001120
3. Shannon Feite, 1995113
4. Jenna Martino, 2008107
5. Kristin Teklinsky, 2004102
6. Shannon Feite, 1997100
- Shannon Feite, 1996100
8. **Grace Dinn, 201197**
9. Bernadette Smith, 200095
- Kerry O'Connell, 200695

GROUND BALLS

1. Kerry O'Connell, 200660
2. Lindsey-Kate McCool, 200653
3. Barb Constantine, 199746
- Rosalyn Frost, 199446
5. Nora Meah, 199945
- Christina Colangelo, 200645
7. Michelle Van Wert, 200444
8. Lindsey-Kate McCool, 200543

- Monica Aducci, 199443
10. Barb Constantine, 199942
- Jen Enoch, 200242
- Rosalyn Frost, 199642
- Elizabeth Fox, 201142**

CAUSED TURNOVERS

1. Barb Constantine, 199846
2. Rosalyn Frost, 199633
3. **Elizabeth Fox, 201130**
4. Kathleen Burke, 200328
5. Jontell Lyons, 200927
- Melissa Hieber, 200027
7. Abby Renninger26
8. Anne Blank, 200225
- Kathleen Burke, 200225
10. Christine Readinger, 200923
- Rae Wojnar, 200923

SAVES

1. Brandy Meyers, 1998216
2. Angela Teti, 1995175
3. Brandy Meyers, 1996167
4. Courtney Huff, 2004157
5. Suzy Herlihy, 2009156
6. Suzy Herlihy, 2008154
- Brandy Meyers, 1997154
8. Suzy Herlihy, 2007152
9. Lauren Bradley, 2001143
10. Courtney Huff, 2005140

SAVE PERCENTAGE

1. Brandy Meyers, 1996601
2. Brandy Meyers, 1997556
- Laurie Campbell, 1994556
4. Brandy Meyers, 1998548
5. Courtney Huff, 2004545
6. Angela Teti, 1995532
7. Suzy Herlihy, 2007517
8. Suzy Herlihy, 2009513
9. Angela Teti, 1997507
10. Courtney Huff, 2002505

GOALS AGAINST AVERAGE

1. Laurie Campbell, 19937.66
2. Courtney Huff, 20038.24
3. Suzy Herlihy, 20078.69
4. Suzy Herlihy, 20098.77
5. Brandy Meyers, 19968.99
6. Lauren Bradley, 20029.41
7. Suzy Herlihy, 20089.46
8. Laurie Campbell, 19949.70
9. Courtney Huff, 20049.91
10. Kaitlin LaBarbera, 201110.82

BOLD indicates current student-athlete



HONORS AND AWARDS

A-10 OFFENSIVE PLAYER OF THE YEAR
2000 Bernadette Smith

A-10 DEFENSIVE PLAYER OF THE YEAR
2009 Suzy Herlihy

ATLANTIC 10 ROOKIE OF THE YEAR
2000 Shannon Hungate

ATLANTIC 10 COACH OF THE YEAR
2009 **Denise Roessler**

ALL-ATLANTIC 10 FIRST TEAM

2009 Jenna Martino
Abby Renninger
Helene Tursi

2008 Jenna Martino
2004 Courtney Huff
Kristin Teklinsky
2001 Bernadette Smith
2000 Bernadette Smith

ALL-ATLANTIC 10 SECOND TEAM

2011 **Elizabeth Fox**
2010 **Grace Dinn**
Elizabeth Fox
2009 Jontell Lyons
2008 Christina Colangelo
Suzy Herlihy
Lindsey-Kate McCool
2006 Kerry O'Connell

ATLANTIC 10 ALL-ROOKIE TEAM

2009 **Meghan McDevitt**
Julie Mineweaser
2008 Christine Readinger
2007 Jenna Martino
2006 Jessica Westlake
2001 Brett Dymarczyk

ATLANTIC 10 ALL-TOURNAMENT TEAM

2009 Meghan Cullinan
Suzy Herlihy
Jenna Martino
Abby Renninger
Helen Tursi
2001 Brett Dymarczyk
Shannon Hungate

ACADEMIC ALL-ATLANTIC 10

2011 **Elizabeth Fox**
Kaitlin LaBarbera
2009 Christine Readinger
Jessica Westlake
2008 Christina Colangelo
Jessica Westlake
2007 Jen Fletcher
Jessica Westlake
2006 Christina Colangelo
2004 Megan Gresh
Amie Schmoltze
2003 Lauren Foley

2002 Megan Gresh
Anne Blank
Katie Helder
2001 Anne Blank
Katie Helder
Bernadette Smith
2000 Anne Blank
Katie Helder
1999 Donna Burke
Bridget Curry
Nora Meah

IWLCA ALL-REGION FIRST TEAM
2009 Jenna Martino

IWLCA ALL-REGION SECOND TEAM

2009 Helene Tursi
2009 Suzy Herlihy
2009 Abby Renninger

IWLCA NATIONAL HONOR ROLL

2003 Lauren Foley
Megan Gresh
2000 Donna Burke
Siobhan Leavy
1999 Donna Burke
Nora Meah
1995 Jessica Huffman

TEAM AWARDS

MOST OUTSTANDING PERFORMER

2011 **Gwen Nihill**
2010 **Grace Dinn**
2009 Helene Tursi
2008 Lindsey-Kate McCool
2007 Suzy Herlihy
2006 Kerry O'Connell
2005 Courtney Huff
2004 Courtney Huff
2003 Courtney Huff
2002 Anne Blank
2001 Bernadette Smith
2000 Melissa Hieber
1999 Nora Meah
1998 Barb Constantine
1997 Shannon Feite
Brandy Meyers
1996 Shannon Feite
1995 Roslyn Frost
1994 Monica Adduci
1993 Jessica Huffman

VASQUEZ AWARD FOR LOYALTY

2011 **Jen Peters**
2010 Christine Readinger
2009 Jontell Lyons
2008 Colleen Ingelsby
2007 Jen Fletcher
2006 Jenny Egan
2005 Sarah Magan
2004 Jen Enoch
2003 Lauren Foley
2002 Melissa Hieber
2001 Amy Hoffman
2000 Amy Hoffman
1999 Barb Constantine
1998 Megan Maher

SCHOLAR-ATHLETE AWARD

2011 Kaitlin LaBarbera
2010 **Elizabeth Fox**
2009 Jessica Westlake
2008 Courtney McNamara
2007 Jessica Westlake
2006 Sarah Magan
2005 Sarah Magan
2004 Megan Gresh
2003 Megan Gresh
2002 Anne Blank
2001 Katie Helder
2000 Anne Blank
1999 Anne Blank
1998 Stacey Nelson
1997 Margot Grant

OUTSTANDING OFFENSIVE PLAYER

2011 **Jen Peters,**
Grace Dinn
Grace Dinn
2010 Helene Tursi
2009 Jenna Martino
2008 Jessica Westlake
2005 Kerry O'Connell
2004 Kerry O'Connell
Kristin Teklinsky
2003 Kristin Teklinsky
2002 Kristin Teklinsky
2001 Bernadette Smith
2000 Bernadette Smith
1999 Lisa Chicarelli
1998 Megan Maher
1997 Shannon Feite
1996 Shannon Feite
1995 Shannon Feite
Carolyn Wood
1994 Margot Grant

COACHES AWARD

2011 **Gwen Nihill**
2010 **Jen Peters**
2009 Jenna Martino
2008 Lindsey-Kate McCool
2007 Christina Colangelo
Colleen Ingelsby
2006 Christina Colangelo
Lindsey-Kate McCool

OUTSTANDING DEFENSIVE PLAYER

2011 Christine Readinger, **Elizabeth Fox**
2010 **Elizabeth Fox**
2009 Meghan Cullinan
2008 Abby Renninger
2007 Suzy Herlihy
2005 Michelle Van Wert
2004 Michelle Van Wert
2003 Kat Burke
2002 Katie Helder
2001 Anne Blank
2000 Melissa Hieber

DORIE LEAHY AWARD

2011 Christine Readinger
2010 Jenna Martino
2009 Abby Renninger
2008 Christina Colangelo
2007 Katelyn Kinney

MOST IMPROVED PLAYER

1998 Bridget Curry
Michelle Young
1997 Anne Vandergrift
1996 Nora Meah
1995 Joan Fedesco
1994 Melissa Trzaska
1993 Amy McMaster

Current athletes in **BOLD**



ALL-TIME ROSTER

A
 Monica Adduci1993-96
 Jenna Ambrosini2008-10
Alisha Aquilino2010-Present
 Alexis Arons2008-09

B
 Gracia Barr2008
 Marisa Barriere2002
 Alison Bean2005-07
 Ashley Belmonte2003-04
 Pam Bilger2000
 Anne Blank1999-02
 Mahim Booth2002
 Ashley Brennan2005-07
 Lindsay Brown2003-05
 Donna Burke1997-00
 Kathleen Burke2000-03
 Lauren Bradley1999-02
 Kelly Butler2000-03

C
 Maureen Callahan1998-99
 Lauren Cameron1999-00
 Laurie Campbell1993-94
 Bridget Carney2003-04
 Shannon Carney2000
 Megan Cassidy1999-00
 Meghan Cheverie2003-05
 Lisa Chicarelli1999
 Christina Colangelo2005-08
 Becca Collins2006-08
 Maureen Colvin1993
 Dottie Cooke2000
 Missy Cordrey1999
 Barb Constantine1996-99
 Lindsey Crits2009
 Meghan Cullinan2006-09
 Kathy Curley2001
Molly Curcio2011-present
 Bridget Curry1996-99

D
 Keri Davisson1993
 Jessika DiCampi1997-00
 Eileen DiCosmo1993
Grace Dinn2009-present
 Megan Donovan2000-01
 Brett Dymarczyk2000-03

E
 Jen Enoch2001-04
 Jenny Egan2003-06

F
Julie Falcone2011-present
 Shannon Feite1994-97
 Joanie Fedesco1995-97

Lauren Fithian2005
 Suzanne Finley2005-07
 Jen Fletcher2004-07
 Jessica Fletcher2006-07
 Lauren Foley2000-03
 Beth Forrest1997
Elizabeth Fox2009-present
 Roslyn Frost1993-96

G
 Monica Galie2002
 Laura Garrick1998-99
 Amanda Glah2001
Alana Glanell2009-present
 Christine Glinski1993-95
 Rachael Goldstein2009
 Margot Grant1994-97
 Melissa Gravitt1999
 Megan Gresh2001-04
 Jenna Griswold2004

H
 Meghan Hannigan1993
Allison Heath2011-present
 Katie Helder1999-02
 Suzy Herlihy2007-09
 Melissa Hieber1999-02
 Kelly Hilferty1994-97
 Amy Hoffman1998-01
 Brittany Holton2004
 Erin Howard1999
 Kelly Huether2006-08
 Courtney Huff2002-05
 Jessica Huffman1993-95
 Shannon Hungate2000-03
Hannah Hutchins2011-present

I
 Colleen Ingelsby2006-08

J
 Kristina Jaggars2004-07

K
 Janine Kassi1993-94
 Ashley Keiser2002
Carly Kindbom2009-present
 Katelyn Kinney2004-07
 Mary E. Klepper2009-10
 Susan Kohler1998-99

L
 Kaitlin LaBarbera2007-11
 Siobhan Leavy2000
 Casey Lieb2007-08
 Jontell Lyons2006-09
 Kelly Lyons1995
 Maddie Lynch2008

M
Alli MacDonald2009-present
 Sarah Magan2004-07
 Taylor Mallory2010
 Meegan Manion1993
 Jen Mariani1993-94
 Jenna Martino2007-10
 Megan Maher1995-98
Alexa Matthews2010-Present
 Jennifer Mayberry1995
 Kelly McCann1993
 Caitlin McCarthy2003-05
 Lindsey-Kate McCool2005-08
Meghan McDevitt2009-present
 Christine McDonagh1995
 Bridget McDonald1993
Nora McGeever2011-present
Nora McGuire2010-Present
 Courtney McManama2006-08
 Amy McMaster1993
 Maura McNamara1999-02
 Nora Meah1996-99
 Brandy Meyers1995-98
 Rebecca Miller1993
 Samantha Milnes2005
Gianna Minutillo2011-present
Julie Mineweaser2009-present
 Ashley Moltz1996-99
 Kristin Moore2003-05
 Kathleen Morley2003-05
 Renee Murray1999

N
 Emily Nelson1998-99
 Stacy Nelson1997-98
 Jeanne Nicastro2001
Gwen Nihill2010-Present

O
 Kerry O'Connell2003-06
 Megan O'Donnell2004-07
 Melissa O'Meara2002-03
 Patricia Ochal1996-99
Heather Olson2010-Present
 Kristen Olszak2000

P
 Lauren Paddison2007
 Ali Peach2003
 Kelley Pendergast2008-10
Jen Peters2009-present
Jess Phelan2010-present
Hallie Pickard2011-present

R
 Christine Readinger2008-11
 Jen Reali1999
 Meagan Rees2006-07

Abby Renninger2006-09
 Alison Reynolds2008-10
 Kristen Reynolds2008-10
 Ashley Richardson1999-00
 Christine Ryan1995-98

S
 Kristen Sanok1998-99
 Anastasia Schafer2003-04
 Ashley Scherer2008-11
 Amie Schmoltze2001-04
 Shannon Scott2002-05
 Jennifer Sheehan2000
 Bernadette Smith1998-01
 Kate Stefanski1994
 Amy Sweeney1993-95
 Cara Sweeney1997-00

T
 Danielle Tanguay2004-07
 Kristin Teklinsky2001-04
 Angela Teti1994-97
 Cassandra Tronoski2000
 Melissa Trzaska1993-95
 Lura Turner2003
 Helene Tursi2006-09

V
 Anne Vandergrift1996-99
 Michelle Van Wert2002-05
 Tara Vislocky2001
 Mary Vizza1994
 Francesca Volpe2008-11

W
 Colleen Walsh1996-99
 Melissa Washer1994
 Marcie Weinzettl2000-02
 Jessica Westlake2006-09
 Karen Wiley2006-07
 Kimberly Williams2002
 Megan Withers2006
 Rae Wojnar2007-10
 Carolyn Wood1995-97
 Leann Wurst2006

Y
Lauren Young2011-present
 Michelle Young1993
 Michelle Young1997-99

* - CURRENT ATHLETES IN BOLD

ALL-TIME RESULTS



2011			
5-11 Overall, 1-6 Atlantic 10			
Date	Opponent	Score	W/L
2/23	DREXEL	14-2	L
2/26	at Wagner	12-5	W
3/2	at Lehigh	16-3	L
3/6	SAINT FRANCIS (Pa.)	10-6	W
3/9	RUTGERS	12-4	L
3/13	at Monmouth	11-6	W
3/19	OLD DOMINION	11-10	L
3/23	at Delaware	13-3	L
3/26	SAINT MARY'S	8-7	W
4/1	LA SALLE	7-6	W
4/3	TEMPLE	12-11	L
4/8	vs. St. Bonaventure	11-10	L
4/10	at Duquesne	14-5	L
4/15	at Richmond	12-6	L
4/17	GEORGE WASHINGTON	9-3	L
4/23	#13 MASSACHUSETTS	14-8	L

Head Coach: Denise Roessler

2010			
2-14 Overall, 0-7 Atlantic 10			
Date	Opponent	Score	W/L
2/20	at Lafayette	14-3	W
2/24	at Drexel	2-8	L
2/28	WAGNER	10-3	W
3/3	DELAWARE	6-12	L
3/6	LEHIGH	7-9	L
3/10	at #20 Rutgers	5-17	L
3/14	MONMOUTH	7-10	L OT
3/17	at #5 Penn	0-14	L
3/20	at Old Dominion	9-14	L
3/26 *	DUQUESNE	10-13	L
3/28 *	ST. BONAVENTURE	12-13	L
4/1 *	at La Salle	8-9	L OT
4/9 *	at George Washington	9-11	L
4/11 *	RICHMOND	7-15	L
4/16 *	at Massachusetts	13-14	L 2OT
4/18 *	at Temple	6-11	L

Head Coach: Denise Roessler

2009			
10-8 Overall, 5-2 Atlantic 10			
Date	Opponent	Score	W/L
2/15	at Lehigh	11-15	L
2/21	LAFAYETTE	14-2	W
2/25	at Delaware	10-8	W
2/27	at Wagner	16-8	W
3/7	GEORGE MASON	11-17	L
3/11	RUTGERS	6-7	L
3/14	DREXEL	5-6	L
3/19	at Villanova	18-4	W
3/21	OLD DOMINION	10-14	L
3/27 *	TEMPLE	15-6	W
3/29 *	MASSACHUSETTS	8-10	L
4/3 *	at St. Bonaventure	12-5	W
4/5 *	at Duquesne	15-10	W
4/9 *	LA SALLE	16-6	W
4/17 *	GEORGE WASHINGTON	11-8	W
4/19 *	at Richmond	5-12	L
4/24 #	vs. Richmond	11-10	W
4/26 #	vs. Massachusetts	14-15	L

Head Coach: Denise Roessler

2008			
7-9 Overall, 2-5 Atlantic 10			
Date	Opponent	Score	W/L
2/18	LEHIGH	15-16	L
2/24	at Lafayette	11-7	W
2/27	WAGNER	11-3	W
3/3	at Old Dominion	11-12	L
3/7	LOUISVILLE (2OT)	9-8	W
3/12	VILLANOVA	12-2	W
3/20 *	at Temple	8-9	L
3/22	at George Mason (#13)	6-14	L
3/26	at Drexel (OT)	9-8	W
3/30 *	ST. BONAVENTURE (2OT)	10-9	W
4/2	at Rutgers	8-14	L
4/6 *	LA SALLE	11-9	W
4/11 *	MASSACHUSETTS	8-9	L
4/13 *	at Duquesne	11-14	L
4/18 *	GEORGE WASHINGTON	7-9	L
4/20 *	at Richmond	9-13	L

Head Coach: Denise Roessler

2007			
7-9 Overall, 2-5 Atlantic 10			
Date	Opponent	Score	W/L
3/3	at Wagner	12-6	W
3/11	DREXEL	4-11	L
3/13	at Villanova	13-7	W
3/23	ROBERT MORRIS	10-6	W
3/25	GEORGE MASON	7-15	L
3/30	LONG ISLAND	19-4	W
4/3	RUTGERS	5-11	L
4/6 *	RICHMOND (OT)	7-9	L
4/8 *	at St. Bonaventure	6-13	L
4/13 *	DUQUESNE (3OT)	7-8	L
4/17	LAFAYETTE	14-6	W
4/20 *	LA SALLE	14-7	W
4/22 *	at George Washington	1-9	L
4/24	at Lehigh	5-13	L
4/27 *	at Massachusetts	5-9	L
4/29 *	TEMPLE	11-8	W

Head Coach: Denise Roessler

2006			
5-11 Overall, 1-6 Atlantic 10			
Date	Opponent	Score	W/L
3/10	WAGNER	13-9	W
3/12	at Drexel	8-17	L
3/17	LEHIGH	11-12	L
3/19	at Rutgers	8-11	L
3/23	at Lafayette	11-6	W
3/25	at George Mason	8-18	L
4/1 *	LA SALLE	13-10	W
4/4	LONG ISLAND	15-8	W
4/7 *	G. WASHINGTON (OT)	9-10	L
4/13 *	MASSACHUSETTS	7-10	L
4/15 *	at Temple	9-16	L
4/20 *	at Duquesne	5-17	L
4/23	at Duke (#1)	2-24	L
4/25	VILLANOVA	14-8	W
4/28 *	at Richmond (#11)	2-20	L
4/30 *	ST. BONAVENTURE	10-12	L

Head Coach: Denise Roessler

2005			
5-10 Overall, 1-6 Atlantic 10			
Date	Opponent	Score	W/L
3/14	WAGNER	11-5	W
3/16	AMERICAN	9-11	L
3/19	at Lehigh (OT)	13-12	W
3/22	LAFAYETTE	14-8	W
3/29	UC-DAVIS	7-9	L
4/5	DREXEL	8-14	L
4/8 *	TEMPLE	10-14	L
4/10 *	at Massachusetts	10-7	W
4/15 *	at George Washington	5-17	L
4/17 *	RICHMOND	7-15	L
4/21 *	at La Salle	6-15	L
4/23	at Villanova	10-9	W
4/26	RUTGERS	5-7	L
4/29 *	DUQUESNE	6-11	L
5/1 *	at St. Bonaventure	9-17	L

Head Coach: Denise Roessler

2004			
8-6 Overall, 2-5 Atlantic 10			
Date	Opponent	Score	W/L
3/12	MARIST	11-5	W
3/21	at Columbia	4-11	L
3/26	at Drexel	10-8	W
3/28	at Wagner	9-7	W
4/4 *	at Temple	5-17	L
4/8 *	ST. BONAVENTURE (OT)	12-13	L
4/16	Lafayette	13-8	W
4/18 *	LA SALLE	11-10	W
4/20	LEHIGH	9-3	W
4/23 *	MASSACHUSETTS	11-13	L
4/25 *	at Duquesne	9-11	L
4/28	VILLANOVA	18-8	W
4/30 *	GEORGE WASHINGTON	14-13	W
5/2 *	at Richmond	7-16	L

Head Coach: Denise Roessler

HAWKS VS. ALL-OPPONENTS

OPPONENT	W-L
Albany	0-1
American	1-6
Boston College	0-4
Bucknell	0-6
Bloomsburg	1-2
California	0-1
Central Connecticut State	2-0
Columbia	2-1
Davidson	2-0
Delaware	1-2
Drexel	6-10
Duke	0-1
Duquesne	1-12
Eastern	1-0
Goucher	1-1
Georgetown	0-3
George Mason	1-7
George Washington	3-7
Gwynedd Mercy	2-0
Harvard	0-1
Jacksonville	First Meeting
Johns Hopkins	0-2
Lafayette	8-6
La Salle	10-4
Lehigh	5-13
Long Island	2-0
Louisville	1-0
Manhattan	First Meeting
Marist	1-0
Massachusetts	2-17
Mercyhurst	1-0
Millersville	1-1
Monmouth	2-1
Mount St. Mary's	1-0
Muhlenberg	1-0
New Hampshire	0-1
Notre Dame	1-0
Old Dominion	0-4
Penn	0-1
Philadelphia Textile	1-0
Presbyterian	First Meeting
Richmond	1-10
Robert Morris	1-0
Rutgers	0-16
Sacred Heart	2-0
Saint Francis (Pa.)	1-0
Saint Mary's (Calif.)	1-1
Stanford	1-0
St. Bonaventure	5-7
Temple	3-10
Towson	0-1
UC Davis	0-1
Ursinus	0-1
Vanderbilt	1-2
Villanova	10-7
Virginia Tech	0-3
West Chester	0-2
Wagner	9-0
Widener	2-1
William & Mary	0-1
Totals	100-183

2012 Opponents in Bold



ALL-TIME RESULTS

2003			
4-11 Overall, 0-7 Atlantic 10			
Date	Opponent	Score	W/L
3/7	DREXEL	8-9	L
3/18	at Lehigh (OT)	5-7	L
3/21	RUTGERS	5-12	L
3/23 *	at George Washington	6-7	L
3/25	LAFAYETTE	13-7	W
3/29	SAINT MARY'S (Calif.)	7-8	L
3/30	WAGNER	13-3	W
4/4 *	RICHMOND	7-11	L
4/6 *	at St. Bonaventure	7-11	L
4/9 *	at La Salle (OT)	8-11	L
4/12 *	DUQUESNE	5-9	L
4/15	AMERICAN	10-9	W
4/23 *	TEMPLE	6-7	L
4/27 *	at Massachusetts (OT)	6-8	L
4/29	at Villanova	8-6	W

Head Coach: Denise Roessler

2002			
3-10 Overall, 2-5 Atlantic 10			
Date	Opponent	Score	W/L
3/16	at Lafayette	6-11	L
3/19	LEHIGH	16-8	W
3/24	VILLANOVA (2OT)	6-7	L
3/26	at Rutgers	8-13	L
3/28	at Drexel	7-9	L
4/3 *	LA SALLE	7-12	L
4/5 *	G. WASHINGTON	15-14	W
4/7	at American	5-7	L
4/12 *	MASSACHUSETTS	3-11	L
4/14 *	at Temple	3-21	L
4/20 *	at Duquesne	7-14	L
4/26 *	at Richmond	8-18	L
4/28 *	ST. BONAVENTURE	13-8	W

Head Coach: Denise Roessler

2001			
5-10 Overall, 2-3 Atlantic 10			
Date	Opponent	Score	W/L
3/14	COLUMBIA	18-17	W
3/17	C. CONNECTICUT STATE	15-3	W
3/22	at Lehigh	10-9	W
3/25	CALIFORNIA	10-14	L
3/27	RUTGERS	6-16	L
3/31	DREXEL	7-9	L
4/3	LAFAYETTE	7-17	L
4/6 *	MASSACHUSETTS	8-14	L
4/10	AMERICAN	8-14	L
4/12	at Villanova	9-15	L
4/21 *	at St. Bonaventure	11-8	W
4/22 *	at Duquesne	5-16	L
4/25 *	LA SALLE	12-11	W
4/29 *	at Temple	3-18	L
5/4 #	TEMPLE	6-15	L

Head Coach: Denise Roessler

2000			
7-8 Overall, 2-4 Atlantic 10			
Date	Opponent	Score	W/L
3/18	C. CONNECTICUT STATE	15-5	W
3/19	BOSTON COLLEGE	6-12	L
3/23	LEHIGH	14-10	W
3/25 *	TEMPLE	0-20	L
3/28	BUCKNELL	6-13	L
3/30	at Drexel	7-6	W
4/4	at Lafayette	6-13	L
4/7 *	at Virginia Tech	5-17	L
4/11	VILLANOVA	16-6	W
4/14 *	DUQUESNE	11-16	L
4/16 *	ST. BONAVENTURE	20-3	W
4/19 *	at Massachusetts	8-18	L
4/25	MARIST	20-8	W
4/27 *	at La Salle	16-12	W
4/29	at American	4-16	L

Head Coach: Denise Roessler

1999			
3-11 Overall, 1-4 Atlantic 10			
Date	Opponent	Score	W/L
3/15	at Lafayette	12-13	L
3/21	at Lehigh	5-16	L
3/23	at Bucknell	1-5	L
3/30	HARVARD	3-9	L

4/3	DREXEL	7-6	W
4/7	AMERICAN	8-10	L
4/9 *	at Duquesne	8-13	L
4/11 *	at Virginia Tech	11-16	L
4/13	at Villanova	9-7	W
4/16 *	LA SALLE	12-9	W
4/18 *	MASSACHUSETTS	9-14	L
4/20 *	at Temple	6-12	L
4/24	RUTGERS	6-16	L
4/28	JOHNS HOPKINS	8-16	L

Head Coach: Denise Roessler

1998			
2-13 Overall			
Date	Opponent	Score	W/L
3/13	VANDERBILT	6-19	L
3/15	BOSTON COLLEGE	4-10	L
3/18	at West Chester	6-10	L
3/22	RICHMOND	8-17	L
3/25	STANFORD	10-8	W
3/29	at American	6-13	L
4/2	LAFAYETTE	5-16	L
4/4	at Rutgers	3-20	L
4/9	at Drexel	5-6	L
4/11	MASSACHUSETTS	2-10	L
4/16	LEHIGH	5-10	L
4/18	BUCKNELL	12-13	L
4/21	VILLANOVA	2-10	L
4/23	LA SALLE	9-7	W
4/28	at Johns Hopkins	3-10	L

Head Coach: Denise Liggett

1997			
4-10 Overall			
Date	Opponent	Score	W/L
3/4	MERCYHURST	26-3	W
3/19	WEST CHESTER	9-11	L
3/21	at Lafayette	5-18	L
3/26	at Columbia	15-8	W
3/29	RUTGERS	7-17	L
4/4	at Boston College	11-13	L
4/6	at Massachusetts	6-11	L
4/10	DREXEL	11-10	W
4/12	VANDERBILT	8-11	L
4/13	NOTRE DAME	21-10	W
4/17	at Lehigh	5-10	L
4/19	at Bucknell	11-17	L
4/22	at Villanova	6-7	L
4/26	GEORGE MASON	8-13	L

Head Coach: Denise Liggett

1996			
8-6 Overall			
Date	Opponent	Score	W/L
3/12	MILLERSVILLE	13-8	W
3/14	VIRGINIA TECH	13-16	L
3/16	BOSTON COLLEGE	9-1	L
3/23	BUCKNELL	5-13	L
3/27	at Mount St. Mary's	15-1	W
3/30	at Rutgers	4-9	L
4/2	MONMOUTH	15-9	W
4/11	at Drexel	11-6	W
4/13	VANDERBILT	12-11	W
4/16	LEHIGH	10-14	L
4/20	MASSACHUSETTS	11-8	W
4/23	VILLANOVA	4-3	W
4/25	at Bloomsburg	13-8	W
4/27	at George Mason	4-9	L

Head Coach: Denise Liggett

1995			
4-13 Overall			
Date	Opponent	Score	W/L
3/7	DAVIDSON	17-8	W
3/16	MILLERSVILLE	12-20	L
3/18	WILLIAM & MARY	4-18	L
3/23	at Ursinus	9-12	L
3/25	at Sacred Heart	16-6	W
3/28	at Muhlenberg	20-11	W
3/30	at Goucher	9-16	L
4/1	RUTGERS	3-13	L
4/6	WIDENER	16-5	W
4/9	at Massachusetts	6-19	L
4/11	at Lehigh	9-18	L
4/18	at Towson	4-21	L

4/20	GEORGETOWN	1-20	L
4/22	at Bucknell	8-15	L
4/25	at Villanova	7-17	L
4/27	BLOOMSBURG	16-18	L
4/29	GEORGE MASON	10-18	L

Head Coach: Denise Liggett

1994			
6-7 Overall			
Date	Opponent	Score	W/L
3/16	GWYNEDD MERCY	13-3	W
3/19	NEW HAMPSHIRE	3-21	L
3/23 \$	UC-Santa Barbara	17-15	W
3/26	SACRED HEART	19-8	W
3/27	UALBANY	8-10	L
3/31	GOUCHER	11-10	W
4/5	at Georgetown	9-19	L
4/7	at Widener	14-9	W
4/10	MASSACHUSETTS	7-12	L
4/12	LEHIGH	5-22	L
4/16 \$	LA SALLE	26-1	W
4/23	at George Mason	15-8	W
4/24	at Davidson	16-6	W
4/26	VILLANOVA	8-20	L
4/28	at Bloomsburg	5-14	L

Head Coach: Denise Liggett

1993			
3-3 Overall			
Date	Opponent	Score	W/L
3/3 \$	Temple J.V.	5-12	L
3/23	GWYNEDD MERCY	18-4	W
3/25 \$	LA SALLE	20-4	W
3/27 \$	ARMY	17-11	W
3/30	WIDENER	8-15	L
4/3	GEORGETOWN	5-21	L
4/7 \$	at Penn State J.V.	4-14	L
4/14 \$	at Haverford J.V.	19-4	W
4/17 \$	BLUE BLAZERS	17-0	W
4/21	EASTERN	16-4	W
4/23	at Villanova	3-14	L
4/24	PHILADELPHIA TEXTILE	15-3	W

Head Coach: Denise Liggett

* - indicates Atlantic 10 game
- indicates Atlantic 10 Tournament game
\$ - indicates exhibition game



Denise Roessler has patrolled the sidelines for SJU since 1999.

ADMINISTRATION



John W. Smithson
Interim President



Don DiJulia
Associate Vice President
Athletic Director

ATHLETIC DIRECTORY

Associate Vice President/Athletic Director	Don DiJulia
Assistant Vice President/Athletic Business Affairs	Jim Brown
Assistant Vice President/Athletic Development	Katie Shields
Associate Athletic Director/Varsity Programs	Renie Shields
Associate Athletic Director/Facilities	Al Pendleton
Associate AD/Marketing/Corporate Partnerships	Tim Curran
Assistant Athletic Director/Communications	Marie Wozniak
Assistant AD/Recreation & Intramurals	Corey Shannon
Assistant Athletic Director/Facilities	Joe DeLacy
Director of Educational Support Services	Janet Greder
Director of Sports Medicine	Lori Rafferty
Athletic Comm. Asst. (Men's Lacrosse Contact)	Chris Humbrecht
SID E-mail	ch578749@sju.edu
Athletic Office Phone	610-660-1707
Athletic Office Fax	610-660-1716

SAINT JOSEPH'S UNIVERSITY ATHLETICS MISSION STATEMENT



The Mission of the Athletics Department at Saint Joseph's University reflects the Mission of the University by using the programs within Athletics as a way to develop the whole person and preparing men and women for others.

- To educate the whole person by complementing the academic experience with athletic and recreational programs and activities outside the classroom.
- To create an environment for personal growth through openness, respect, and a concern for others.
- To communicate the value of community and family through team work and sportsmanship.
- To provide opportunities for students to learn self-discipline, responsibility, decision-making, and attainment of goals.
- To provide opportunities for students to participate and compete in a first-class manner.
- To provide equitable opportunities for all students and staff, including women and minorities.
- To advance the University regionally and nationally through intercollegiate athletics.

DIRECTIONS TO FINNESEY FIELD

From the North: N.J. Turnpike to Exit 6 (Pa. Turnpike connector). Follow Pa. Turnpike to Exit 326 (Rte. 476). Follow 476 South to Rte. 76 East, towards Philadelphia. Follow Rte. 76 East to Exit 339 (Rte. 1, City Avenue). Follow two miles to SJU.

From the East: Take either the Ben Franklin Bridge (via Rte. 676) or the Walt Whitman Bridge; Follow Rte. 76 West to Exit 339 (Rte. 1, City Avenue). Follow two miles to SJU.

From the South: I-95 North to 476 North. Follow 476 North to Exit 5 (Rte. 1). Follow Rte. 1 North to SJU, approximately 10 miles.

From the West: Pa. Turnpike to Exit 326 (Valley Forge). Follow Rte. 76 East, towards Philadelphia, to Exit 339 (Rte. 1, City Avenue). Follow two miles to SJU.

From the Airport: I-95 North to Rte. 76 West towards Valley Forge. Follow Rte. 76 West to Exit 339 (Rte. 1, City Avenue). Follow two miles to SJU.



THE UNIVERSITY

Founded in 1851, Saint Joseph's is an independent, Catholic, Jesuit university teaching disciplined reasoning, effective communication and a love of learning. From Willings Alley in Old City Philadelphia to Stiles Street in North Philadelphia to its current location on City Avenue, Saint Joseph's has continued to grow and change with the times. The University combines the Jesuit tradition of academic excellence, a history of service and an ideal campus location to produce successful students who strive to make a good world even better.

Full-time, undergraduate day enrollment comprises approximately 4,600 students. Graduate, evening and executive programs push total enrollment to more than 8,000 students.

THE JESUIT TRADITION OF ACADEMIC EXCELLENCE

Saint Joseph's nationally-recognized academic reputation is confirmed by ongoing acknowledgment in Barron's, U.S. News & World Report and Peterson's. The Jesuit tradition of intellectual inquiry and personal concern manifests itself in small, challenging classes taught by a caring faculty. Graduate assistants do not teach, so undergraduates can be sure they are receiving the very best educational experience from trained experts. One-on-one interaction between students and faculty is a reality at Saint Joseph's.

A solid liberal arts curriculum provides across-the-board learning for every student. Supporting that curriculum are comprehensive academic majors and learning facilities. The result is a broad education that prepares students not only for employment and graduate school, but for life itself.

In the fall of 1998, SJU opened the \$25 million Owen A. Mandeville Hall, which houses the Erivan K. Haub School of Business, the Center for Food Marketing and the region's first "Teletorium" and "Moot Boardrooms." An 87,000-square-foot international academic center featuring state-of-the-art distance learning technology, it is located near the corner of 54th Street and City Avenue.

A HISTORY OF SERVICE

The students of Saint Joseph's University are dedicated to making today's world even better. A natural spirit of volunteerism has enabled the University's community service programs to become the most popular extracurricular activities on campus. In addition, a Service Learning program allows students to receive academic credit for their work outside the classroom.



SJU offers local, national and international opportunities for student service. From North Philadelphia to Camden, N.J.; from New Orleans to the Appalachian Mountains, Saint Joseph's students embrace the Jesuit mission of serving those in need. The Thanksgiving Dinner Dance for area senior citizens and the Hand-in-Hand Festival for the handicapped are two annual student-run events that draw thousands of special visitors to campus for fun and friendship.

IDEAL CAMPUS LOCATION

SJU's City Avenue location combines the best of dynamic Philadelphia with the suburban, residential setting of the elegant Main Line. Saint Joseph's 65 acres span two counties, allowing students to literally enjoy the best of both worlds. The city of Philadelphia, with its tremendous wealth of historical, cultural, social and athletic attractions, is easily accessible, while the safety, serenity and greenery of a suburban campus are right at hand.

The friendly atmosphere and close-knit campus ensure that students don't get lost in either the literal or the figurative sense at Saint Joseph's. Expanded library, computer and athletic facilities add a big-time "feel" to this growing university.

SUCCESSFUL STUDENTS

Men and women leave Saint Joseph's prepared. The University boasts an excellent record of placing its graduates in first-time jobs, profession-

al schools and other advanced degree programs. Part-time work and internships provide real-world experiences, the kind which delight future employers. And with its many diverse student organizations, SJU offers ample opportunities to assume leadership positions.

An extensive on-campus recruitment program provides graduates with a head start in their employment search. Regular meetings with faculty advisors, along with advisory programs in the health professions and in pre-law, assist students who wish to further their schooling.

PHILADELPHIA

SJU's Philadelphia location gives students access to two worlds. The campus resembles a park, surrounded by the stately homes of Philadelphia's historic Main Line suburbs. Yet students have access to the cultural, commercial and recreational activities of downtown Philadelphia - only a short ride away. SJU students take frequent advantage of the artistic and cultural resources Philadelphia offers, as well. They visit the Philadelphia Museum of Art; the Pennsylvania Academy of the Fine Arts; the Franklin Institute Science Museum; the Academy of Music, which houses ballet and opera; and the new Kimmel Center, home to the Philadelphia Orchestra. In addition, SJU students enjoy rooting for Philadelphia's teams in the four major professional sports leagues.

2012 WOMEN'S LACROSSE SCHEDULE

DAY	DATE	OPPONENT	TIME
Wednesday	Feb. 22	at Drexel	4:00 p.m.
Saturday	Feb. 25	WAGNER	1:00 p.m.
Tuesday	Feb. 28	MONMOUTH	4:00 p.m.
Sunday	Mar. 4	at Jacksonville	12:30 p.m.
Wednesday	Mar. 7	Presbyterian	1:00 p.m.
Sunday	Mar. 11	at Saint Francis (Pa.)	12:00 p.m.
Wednesday	Mar. 14	MANHATTAN	4:00 p.m.
Saturday	Mar. 17	at Old Dominion	12:00 p.m.
Wednesday	Mar. 21	at Rutgers	7:00 p.m.
Friday	Mar. 30	at George Washington*	4:00 p.m.
Sunday	Apr. 1	RICHMOND*	1:00 p.m.
Friday	Apr. 6	at Massachusetts*	3:30 p.m.
Friday	Apr. 13	ST. BONAVENTURE*	3:30 p.m.
Sunday	Apr. 15	DUQUESNE*	1:00 p.m.
Friday	Apr. 20	at Temple*	3:00 p.m.
Sunday	Apr. 22	at La Salle*	1:00 p.m.
Friday	Apr. 27	Atlantic 10 Semifinals * *	TBA
Sunday	Apr. 29	Atlantic 10 Finals * *	TBA

* - A10 Conference Game

* * - Robins Stadium (University of Richmond)

Home Games in CAPS

All Game Times Are EST

